



RECP #: 752655

RECORDED 5/8/2019 AT 1:11 PM BK# 2620 PG# 1697  
Debra K. Lee, CLERK OF LARAMIE COUNTY, WY PAGE 1 OF 1

# STATE OF WYOMING CORNER RECORD

(In compliance with the CORNER PERPETUATION AND FILING ACT, Wyoming Statutes, 1997 Section 33-29-140, et. seq., and the Rules and Regulations of the Board of Registrations for Professional Engineers and Professional Land Surveyors)

## SOUTHWEST CORNER SECTION 31, T. 18 N., R. 62 W., 6TH P.M., LARAMIE COUNTY, WYOMING

GLO: SET A SANDSTONE 16X14X5, 11 IN. DEEP, WITH 6 MARKS ON EACH OF ITS FOUR FACES, SET TO THE CARDINAL POINTS AND RAISED A MOUND OF STONE AROUND IT FOR CORNER TO TOWNSHIPS 17 AND 18 NORTH, RANGES 63 AND 62 WEST.

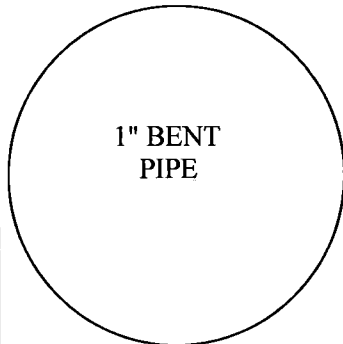
FOUND: A 1" BENT PIPE. THE PIPE IS 10' NORTH OF A SOUTH FENCE LINE, AND IN LINE WITH A EAST AND WEST FENCE LINE.



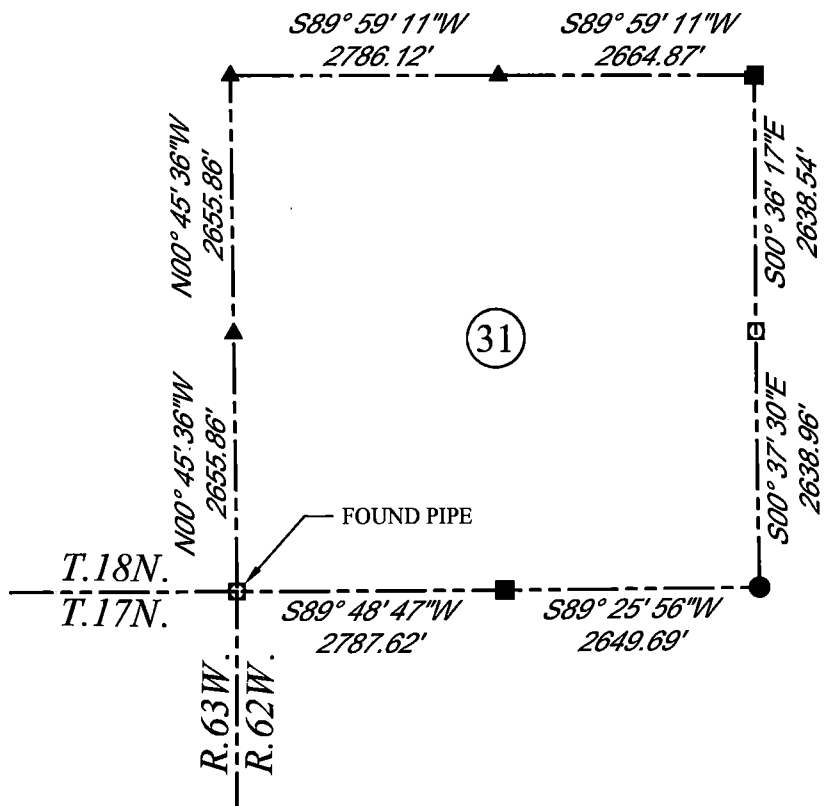
SCALE: NONE  
NORTH DETERMINED BY  
G.P.S OBSERVATIONS

FOUND: 1" BENT PIPE

SET: NOTHING



DATE OF FIELD WORK: 8/9/2018 OFFICE REFERENCE: MERIDEN



### LEGEND:

- FOUND BLM CAP
- FOUND USFS CAP
- FOUND STONE
- FOUND PRIVATE MONUMENT
- ◆ CALCULATED POSITION
- ▲ SET MONUMENT (LS10245)
- SECTION LINE

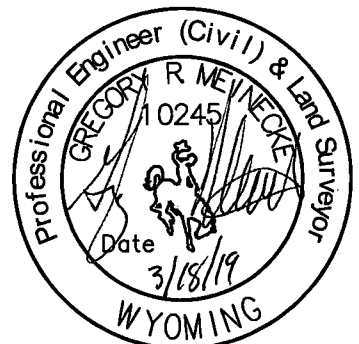
### CROSS INDEX DIAGRAM

	1	2	3	4	5	6	7	8	9	10	11	12	13	14	15	16	17	18	19	20	21	22	23	24	25	
A																										
B																										
C			6																							
D				5																						
E					4																					
F						3																				
G			7																							
H				8																						
J					9																					
K						10																				
L			18																							
M				17																						
N					16																					
O						15																				
P			19																							
Q				20																						
R					21																					
S						22																				
T			30																							
U				29																						
V					28																					
W						27																				
X			31																							
Y				32																						
Z					33																					
	1	2	3	4	5	6	7	8	9	10	11	12	13	14	15	16	17	18	19	20	21	22	23	24	25	

WOOD  
2615 AVIATION DRIVE  
SHERIDAN, WY 82801  
PH: 307-675-6400



THIS CORNER RECORD WAS  
PREPARED BY ME OR UNDER  
MY DIRECTION AND  
SUPERVISION,  
SEAL AND SIGNATURE



CORNER NAME: SOUTHWEST SECTION: 31 T. 18 N., R. 62 W. ; 6TH P.M. CROSS-INDEX # Z-1  
SBRPELS/PLSW: MARCH 1994; PLSW JANUARY 1998