



RECP #: 752693

RECORDED 5/8/2019 AT 1:12 PM BK# 2620 PG# 1735  
Debra K. Lee, CLERK OF LARAMIE COUNTY, WY PAGE 1 OF 1

# STATE OF WYOMING CORNER RECORD

(In compliance with the CORNER PERPETUATION AND FILING ACT, Wyoming Statutes, 1997 Section 33-29-140, et. seq., and the Rules and Regulations of the Board of Registrations for Professional Engineers and Professional Land Surveyors)

## EAST QUARTER CORNER SECTION 36, T. 18 N., R. 62 W., 6TH P.M., LARAMIE COUNTY, WYOMING

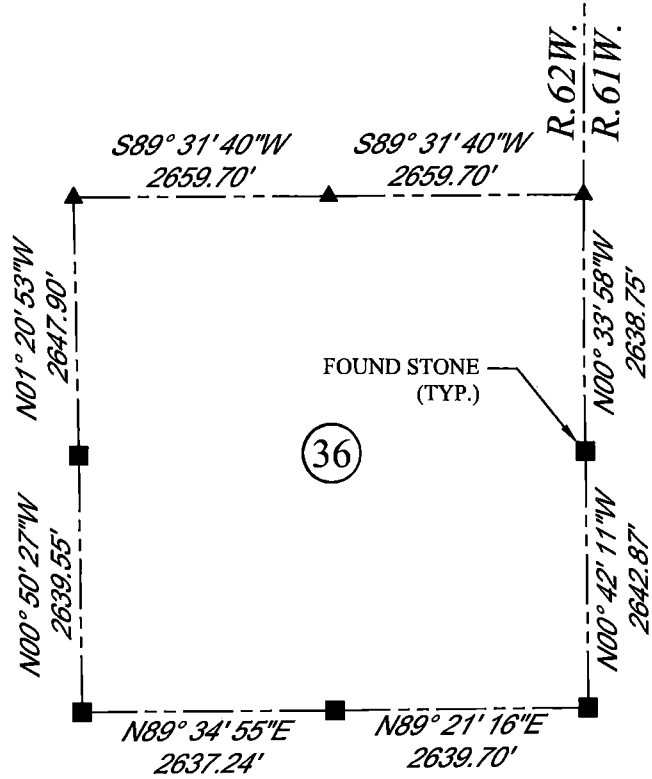
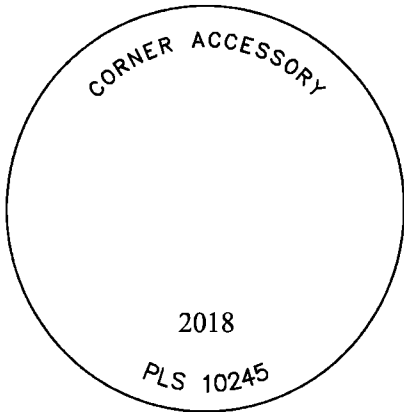
**GLO:** SET A SANDSTONE 18X10X8. 12" DEEP. MARKED 1/4 ON WEST SIDE FOR 1/4 SEC. COR.

**FOUND:** FIRM SET SANDSTONE APPROXIMATELY 13X10X5 DIRECTLY IN NORTH AND SOUTH FENCE LINE. NO MARKINGS FOUND. STONE WAS 0.1' ABOVE SURFACE.

**SET:** 3.25" ALUMINUM CAP ON #5 REBAR, 3" ABOVE SURFACE, MARKED AS SHOWN ON SOUTH SIDE OF FOUND FIRM SET SANDSTONE DIRECTLY UNDER NORTH AND SOUTH FENCE LINE.



SCALE: NONE  
NORTH DETERMINED BY  
G.P.S OBSERVATIONS



### LEGEND:

- FOUND BLM CAP
- FOUND USFS CAP
- FOUND STONE
- FOUND PRIVATE MONUMENT
- ◆ CALCULATED POSITION
- ▲ SET MONUMENT (LS10245)
- SECTION LINE

DATE OF FIELD WORK: 10/02/2018 OFFICE REFERENCE: MERIDEN

### CROSS INDEX DIAGRAM

	1	2	3	4	5	6	7	8	9	10	11	12	13	14	15	16	17	18	19	20	21	22	23	24	25		
A																											A
B																											B
C			6		5		4		3		2		1														C
D																											D
E																											E
F																											F
G			7		8		9		10		11		12														G
H																											H
J																											J
K																											K
L			18		17		16		15		14		13														L
M																											M
N																											N
O																											O
P			19		20		21		22		23		24														P
Q																											Q
R																											R
S																											S
T			30		29		28		27		26		25														T
U																											U
V																											V
W																											W
X			31		32		33		34		35		36														X
Y																											Y
Z																											Z
	1	2	3	4	5	6	7	8	9	10	11	12	13	14	15	16	17	18	19	20	21	22	23	24	25		

WOOD  
2615 AVIATION DRIVE  
SHERIDAN, WY 82801  
PH: 307-675-6400

THIS CORNER RECORD WAS  
PREPARED BY ME OR UNDER  
MY DIRECTION AND  
SUPERVISION,  
SEAL AND SIGNATURE

# wood.

