



RECP #: 752746

RECORDED 5/8/2019 AT 1:15 PM BK# 2620 PG# 1788
Debra K. Lee, CLERK OF LARAMIE COUNTY, WY PAGE 1 OF 1

STATE OF WYOMING CORNER RECORD

(In compliance with the CORNER PERPETUATION AND FILING ACT, Wyoming Statutes, 1997 Section 33-29-140, et. seq., and the Rules and Regulations of the Board of Registrations for Professional Engineers and Professional Land Surveyors)

EAST QUARTER CORNER SECTION 35, T. 18 N., R. 62 W., 6TH P.M., LARAMIE COUNTY, WYOMING

GLO: SET A SANDSTONE 30X24X6, 12IN. DEEP MARKED 1/4 ON W. SIDE FOR 1/4 SEC. COR.

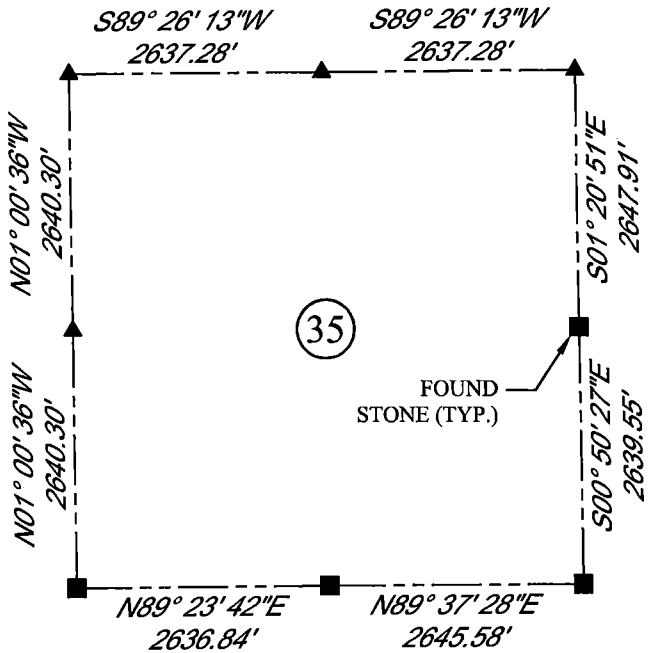
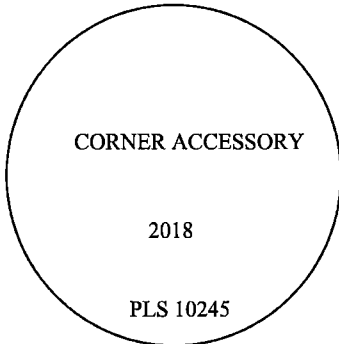
FOUND: FIRM SET STONE 1FT ON WEST SIDE OF NORTH AND SOUTH FENCE LINE, APPROX. 17X15X5. NO MARKINGS FOUND ON THE STONE. SET ALUMINUM CAP, MARKED AS SHOWN.



SCALE: NONE

NORTH DETERMINED BY
G.P.S OBSERVATIONS

SET 3.25" ALUMINUM CAP ON
REBAR, 4IN. ABOVE SURFACE,
STAMPED AS SHOWN. CAP IS
SET ON SOUTH SIDE OF
FOUND FIRM SET STONE.
PLACED A MOUND OF STONES
ON EAST SIDE OF CORNERS.



LEGEND:

- FOUND BLM CAP
- FOUND USFS CAP
- FOUND STONE
- FOUND PRIVATE MONUMENT
- ◇ CALCULATED POSITION
- ▲ SET MONUMENT (LS10245)
- SECTION LINE

DATE OF FIELD WORK: 10/2/2018 OFFICE REFERENCE: MERIDEN

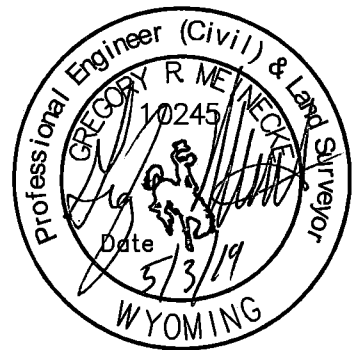
CROSS INDEX DIAGRAM

	1	2	3	4	5	6	7	8	9	10	11	12	13	14	15	16	17	18	19	20	21	22	23	24	25
A																									
B																									
C		6																							
D																									
E																									
F																									
G		7																							
H																									
J																									
K																									
L		18																							
M																									
N																									
O																									
P		19																							
Q																									
R																									
S																									
T		30																							
U																									
V																									
W																									
X		31																							
Y																									
Z																									

WOOD
2615 AVIATION DRIVE
SHERIDAN, WY 82801
PH: 307-675-6400



THIS CORNER RECORD WAS
PREPARED BY ME OR UNDER
MY DIRECTION AND
SUPERVISION,
SEAL AND SIGNATURE



CORNER NAME: EAST QUARTER SECTION: 35 T. 18 N., R. 62 W. ; 6TH P.M. CROSS-INDEX # X-21
SBRPELS/PLSW: MARCH 1994; PLSW JANUARY 1998