



RECP #: 752745

RECORDED 5/8/2019 AT 1:15 PM BK# 2620 PG# 1787  
Debra K. Lee, CLERK OF LARAMIE COUNTY, WY PAGE 1 OF 1

# STATE OF WYOMING CORNER RECORD

(In compliance with the CORNER PERPETUATION AND FILING ACT, Wyoming Statutes, 1997 Section 33-29-140, et. seq., and the Rules and Regulations of the Board of Registrations for Professional Engineers and Professional Land Surveyors)

## WEST QUARTER CORNER SECTION 35, T. 18 N., R. 62 W., 6TH P.M., LARAMIE COUNTY, WYOMING

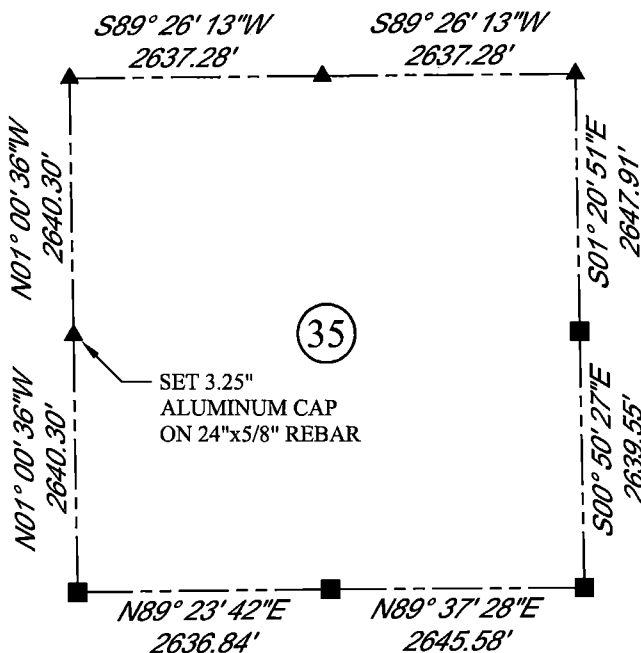
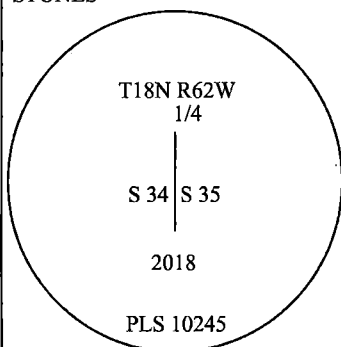
GLO: SET A SANDSTONE 16X10X6, 10IN. DEEP, MARKED 1/4 ON W. SIDE FOR 1/4 SEC. COR.

FOUND: NOTHING. SET ALUMINUM CAP AT PROPORTIONATE (SINGLE) DISTANCE.



SCALE: NONE  
NORTH DETERMINED BY  
G.P.S OBSERVATIONS

SET 3.25" ALUMINUM CAP ON  
REBAR, 2IN ABOVE SURFACE,  
STAMPED AS SHOWN.  
PLACED A COLLAR OF  
STONES



DATE OF FIELD WORK: 10/2/2018 OFFICE REFERENCE: MERIDEN

### LEGEND:

- FOUND BLM CAP
- FOUND USFS CAP
- FOUND STONE
- FOUND PRIVATE MONUMENT
- ◆ CALCULATED POSITION
- ▲ SET MONUMENT (LS10245)
- SECTION LINE

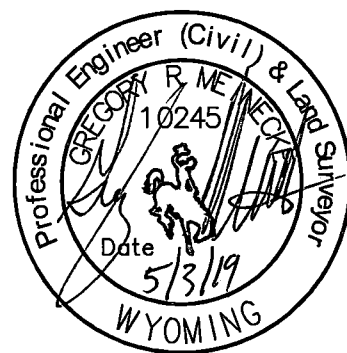
### CROSS INDEX DIAGRAM

	1	2	3	4	5	6	7	8	9	10	11	12	13	14	15	16	17	18	19	20	21	22	23	24	25
A																									
B																									
C		6				5				4					3					2					1
D																									
E																									
F																									
G			7			8				9					10					11					12
H																									
J																									
K																									
L			18			17				16					15					14					13
M																									
N																									
O																									
P				19		20				21					22					23					24
Q																									
R																									
S																									
T				30		29				28					27					26					25
U																									
V																									
W																									
X				31		32				33					34	●				35					36
Y																									
Z																									
	1	2	3	4	5	6	7	8	9	10	11	12	13	14	15	16	17	18	19	20	21	22	23	24	25

WOOD  
2615 AVIATION DRIVE  
SHERIDAN, WY 82801  
PH: 307-675-6400



THIS CORNER RECORD WAS  
PREPARED BY ME OR UNDER  
MY DIRECTION AND  
SUPERVISION,  
SEAL AND SIGNATURE



CORNER NAME: WEST QUARTER SECTION: 35 T. 18 N., R. 62 W. ; 6TH P.M. CROSS-INDEX # X-17  
SBRPELS/PLSW: MARCH 1994; PLSW JANUARY 1998