



RECP #: 752732

RECORDED 5/8/2019 AT 1:14 PM BK# 2620 PG# 1774  
Debra K. Lee, CLERK OF LARAMIE COUNTY, WY PAGE 1 OF 1

# STATE OF WYOMING CORNER RECORD

(In compliance with the CORNER PERPETUATION AND FILING ACT, Wyoming Statutes, 1997 Section 33-29-140, et. seq., and the Rules and Regulations of the Board of Registrations for Professional Engineers and Professional Land Surveyors)

## EAST QUARTER CORNER SECTION 29, T. 18 N., R. 62 W., 6TH P.M., LARAMIE COUNTY, WYOMING

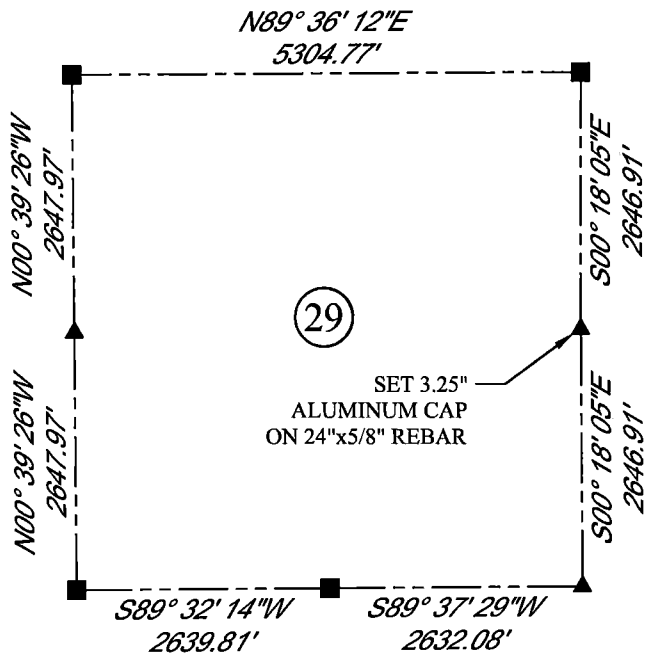
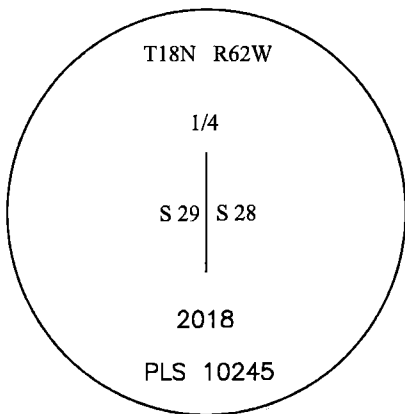
GLO: SET SANDSTONE 16x14x4, 10 ins. DEEP, MARKED 1/4 ON WEST SIDE FOR 1/4 SECTION CORNER  
FOUND: NOTHING. SET 3.25" ALUMINUM CAP AT PROPORTIONATE (SINGLE) DISTANCE, MARKED AS SHOWN



SCALE: NONE

NORTH DETERMINED BY  
G.P.S OBSERVATIONS

SET 3.25" ALUMINUM CAP, STAMPED AS SHOWN  
SET FIBERGLASS ROD NEXT TO MONUMENT



### LEGEND:

- FOUND BLM CAP
- FOUND USFS CAP
- FOUND STONE
- FOUND PRIVATE MONUMENT
- ◇ CALCULATED POSITION
- ▲ SET MONUMENT (LS10245)
- SECTION LINE

DATE OF FIELD WORK: 10/04/2018 OFFICE REFERENCE: MERIDEN

### CROSS INDEX DIAGRAM

	1	2	3	4	5	6	7	8	9	10	11	12	13	14	15	16	17	18	19	20	21	22	23	24	25
A																									
B																									
C			6																						
D				5																					
E					4																				
F						3																			
G			7																						
H				8																					
J					9																				
K						10																			
L			18																						
M				17																					
N					16																				
O						15																			
P			19																						
Q				20																					
R					21																				
S						22																			
T			30																						
U				29																					
V					28																				
W						27																			
X			31																						
Y				32																					
Z					33																				
	1	2	3	4	5	6	7	8	9	10	11	12	13	14	15	16	17	18	19	20	21	22	23	24	25

WOOD  
2615 AVIATION DRIVE  
SHERIDAN, WY 82801  
PH: 307-675-6400

THIS CORNER RECORD WAS  
PREPARED BY ME OR UNDER  
MY DIRECTION AND  
SUPERVISION,  
SEAL AND SIGNATURE

# wood.

