



RECP #: 752730

RECORDED 5/8/2019 AT 1:14 PM BK# 2620 PG# 1772  
Debra K. Lee, CLERK OF LARAMIE COUNTY, WY PAGE 1 OF 1

# STATE OF WYOMING CORNER RECORD

(In compliance with the CORNER PERPETUATION AND FILING ACT, Wyoming Statutes, 1997 Section 33-29-140, et. seq., and the Rules and Regulations of the Board of Registrations for Professional Engineers and Professional Land Surveyors)

## SOUTHEAST CORNER SECTION 23, T. 18 N., R. 62 W., 6TH P.M., LARAMIE COUNTY, WYOMING

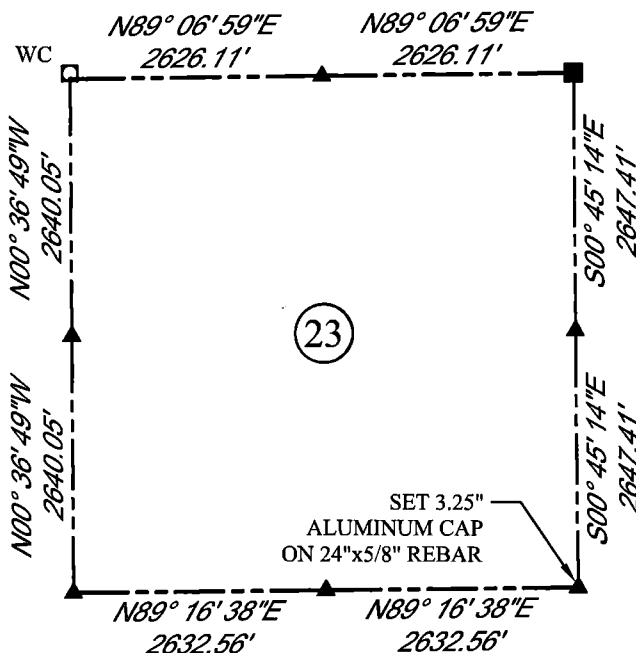
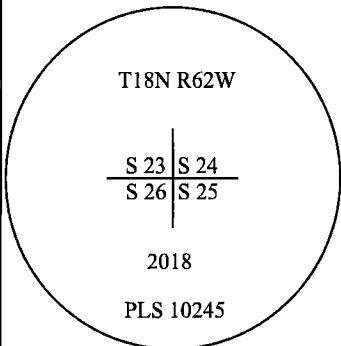
GLO: SET A SANDSTONE 24X18X4, 12IN. DEEP, MARKED WITH 2 NOTCHES ON S. SIDE, AND 1 NOTCH ON E. SIDE FOR COR. TO SEC'S 23, 24, 25, 26.

FOUND: NOTHING. SET ALUMINUM CAP AT PROPORTIONATE (DOUBLE) DISTANCE.



SCALE: NONE  
NORTH DETERMINED BY  
G.P.S OBSERVATIONS

SET 3.25" ALUMINUM CAP ON  
REBAR, AT SURFACE, STAMPED  
AS SHOWN. SET A FIBERGLASS  
ROD ON NORTH SIDE OF  
CORNER.



### LEGEND:

- FOUND BLM CAP
- FOUND USFS CAP
- FOUND STONE
- FOUND PRIVATE MONUMENT
- ◆ CALCULATED POSITION
- ▲ SET MONUMENT (LS10245)
- SECTION LINE

DATE OF FIELD WORK: 10/5/2018 OFFICE REFERENCE: MERIDEN

### CROSS INDEX DIAGRAM

A	1	2	3	4	5	6	7	8	9	10	11	12	13	14	15	16	17	18	19	20	21	22	23	24	25	A
B																										B
C		6																								C
D			5																							D
E				4																						E
F					3																					F
G			7																							G
H				8																						H
J					9																					J
K						10																				K
L							11																			L
M								12																		M
N									13																	N
O										14																O
P											15															P
Q												16														Q
R													17													R
S														18												S
T															19											T
U																20										U
V																	21									V
W																		22								W
X																			23							X
Y																				24						Y
Z																					25					Z
	1	2	3	4	5	6	7	8	9	10	11	12	13	14	15	16	17	18	19	20	21	22	23	24	25	

WOOD  
2615 AVIATION DRIVE  
SHERIDAN, WY 82801  
PH: 307-675-6400



THIS CORNER RECORD WAS  
PREPARED BY ME OR UNDER  
MY DIRECTION AND  
SUPERVISION,  
SEAL AND SIGNATURE

