



RECP #: 752759

RECORDED 5/8/2019 AT 1:16 PM BK# 2620 PG# 1801
Debra K. Lee, CLERK OF LARAMIE COUNTY, WY PAGE 1 OF 1

STATE OF WYOMING CORNER RECORD

(In compliance with the CORNER PERPETUATION AND FILING ACT, Wyoming Statutes, 1997 Section 33-29-140, et. seq., and the Rules and Regulations of the Board of Registrations for Professional Engineers and Professional Land Surveyors)

SOUTHEAST CORNER SECTION 22, T. 18 N., R. 62 W., 6TH P.M., LARAMIE COUNTY, WYOMING

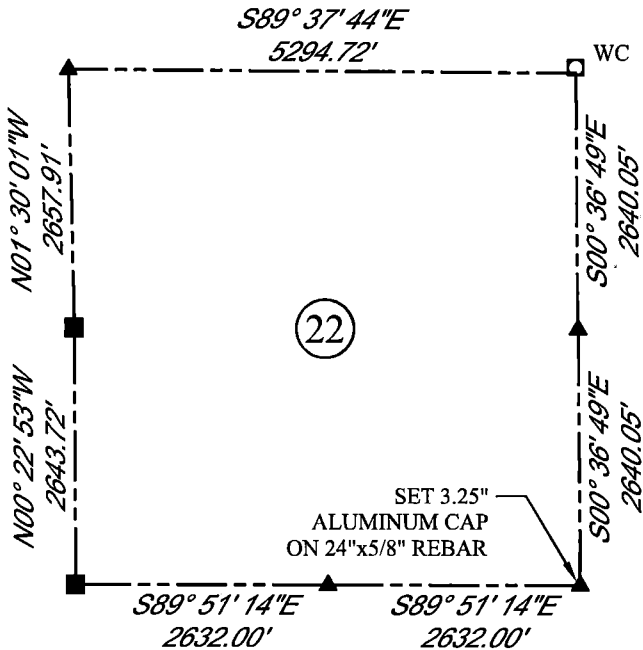
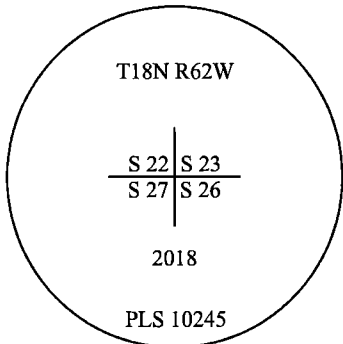
GLO: SET A SANDSTONE 30X20X5, 12IN. DEEP, MARKED WITH 2 NOTCHES ON S. SIDE AND 2 NOTCHES ON E. SIDE FOR COR. TO SEC'S 22, 23, 26, 27.

FOUND: NOTHING. SET ALUMINUM CAP AT PROPORTIONATE (DOUBLE) DISTANCE.



SCALE: NONE
NORTH DETERMINED BY
G.P.S OBSERVATIONS

SET 3.25" ALUMINUM CAP ON REBAR, 2" ABOVE SURFACE, STAMPED AS SHOWN. SET A FIBERGLASS ROD ON NORTH SIDE OF SET CORNER



LEGEND:

- FOUND BLM CAP
- FOUND USFS CAP
- FOUND STONE
- FOUND PRIVATE MONUMENT
- ◆ CALCULATED POSITION
- ▲ SET MONUMENT (LS10245)
- SECTION LINE

DATE OF FIELD WORK: 10/6/2018 OFFICE REFERENCE: MERIDEN

CROSS INDEX DIAGRAM

1	2	3	4	5	6	7	8	9	10	11	12	13	14	15	16	17	18	19	20	21	22	23	24	25	
A																									B
B																									C
C	6																								D
D		5																							E
E			4																						F
F				3																					G
G					2																				H
H						1																			I
I																									J
J																									K
K																									L
L	18																								M
M		17																							N
N			16																						O
O				15																					P
P					14																				Q
Q						13																			R
R																									S
S	19																								T
T		20																							U
U			21																						V
V				22																					W
W					23																				X
X						24																			Y
Y																									Z
Z																									
	1	2	3	4	5	6	7	8	9	10	11	12	13	14	15	16	17	18	19	20	21	22	23	24	25

WOOD
2615 AVIATION DRIVE
SHERIDAN, WY 82801
PH: 307-675-6400

wood.

THIS CORNER RECORD WAS PREPARED BY ME OR UNDER MY DIRECTION AND SUPERVISION, SEAL AND SIGNATURE

