



RECP #: 752765

RECORDED 5/8/2019 AT 1:16 PM BK# 2620 PG# 1807
Debra K. Lee, CLERK OF LARAMIE COUNTY, WY PAGE 1 OF 1

STATE OF WYOMING CORNER RECORD

(In compliance with the CORNER PERPETUATION AND FILING ACT, Wyoming Statutes, 1997 Section 33-29-140, et. seq., and the Rules and Regulations of the Board of Registrations for Professional Engineers and Professional Land Surveyors)

EAST QUARTER CORNER SECTION 19, T. 18 N., R. 62 W., 6TH P.M., LARAMIE COUNTY, WYOMING

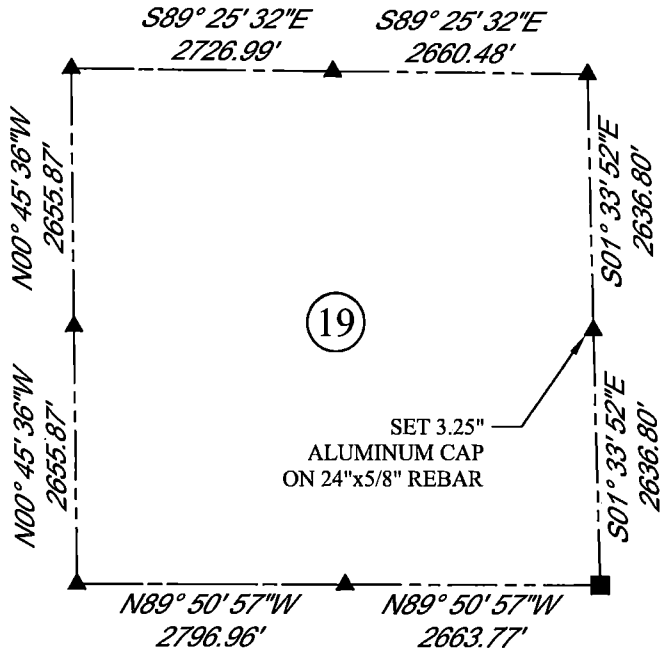
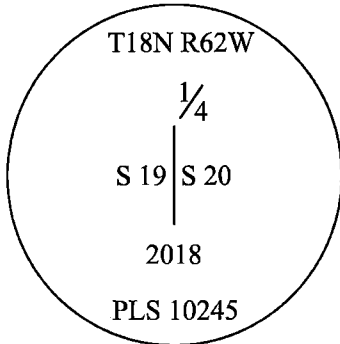
GLO: SET A SANDSTONE 18X14X4, 10 IN. DEEP MARKED 1/4 ON W. SIDE FOR 1/4 SEC. COR.

FOUND: NOTHING. SET ALUMINUM CAP AT PROPORTIONATE(SINGLE) DISTANCE.



SCALE: NONE
NORTH DETERMINED BY
G.P.S OBSERVATIONS

SET 3.25" ALUMINUM CAP ON #5 REBAR, 1" ABOVE SURFACE, STAMPED AS SHOWN. SET 2 MAG NAILS IN FENCE POSTS +- 17' NORTHEASTERLY AND +- 21' SOUTHWESTERLY.



LEGEND:

- FOUND BLM CAP
- ⊙ FOUND USFS CAP
- FOUND STONE
- FOUND PRIVATE MONUMENT
- ◆ CALCULATED POSITION
- ▲ SET MONUMENT (LS10245)
- SECTION LINE

DATE OF FIELD WORK: 10/03/2018 OFFICE REFERENCE: MERIDEN

CROSS INDEX DIAGRAM

A	1	2	3	4	5	6	7	8	9	10	11	12	13	14	15	16	17	18	19	20	21	22	23	24	25	A
B																										B
C			6			5			4			3			2			1								C
D																										D
E																										E
F																										F
G			7			8			9			10			11			12								G
H																										H
J																										J
K																										K
L			18			17			16			15			14			13								L
M																										M
N																										N
O																										O
P			19			20			21			22			23			24								P
Q																										Q
R																										R
S			30			29			28			27			26			25								S
T																										T
U																										U
V																										V
W																										W
X			31			32			33			34			35			36								X
Y																										Y
Z																										Z

WOOD
2615 AVIATION DRIVE
SHERIDAN, WY 82801
PH: 307-675-6400



THIS CORNER RECORD WAS
PREPARED BY ME OR UNDER
MY DIRECTION AND
SUPERVISION,
SEAL AND SIGNATURE

