



RECP #: 752712

RECORDED 5/8/2019 AT 1:13 PM BK# 2620 PG# 1754
Debra K. Lee, CLERK OF LARAMIE COUNTY, WY PAGE 1 OF 1

STATE OF WYOMING CORNER RECORD

(In compliance with the CORNER PERPETUATION AND FILING ACT, Wyoming Statutes, 1997 Section 33-29-140, et. seq., and the Rules and Regulations of the Board of Registrations for Professional Engineers and Professional Land Surveyors)

EAST QUARTER CORNER SECTION 13, T. 18 N., R. 62 W., 6TH P.M., LARAMIE COUNTY, WYOMING

GLO: SET A SANDSTONE 16X10X4 11 IN. DEEP. MARKED 1/4 ON W. FACE FOR 1/4 SEC. COR.

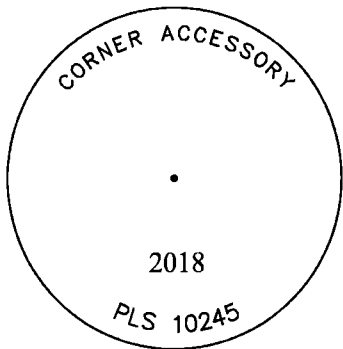
FOUND: FIRM SET SANDSTONE, APPROX. 13X9X3. STONE WAS BROKEN HALF WAY IN THE GROUND. NO MARKINGS FOUND. STONE IS APPROX. 2' ON E. SIDE OF N & S FENCE LINE.

SET: ALUMINUM CAP AS SHOWN ON S. SIDE OF STONE. CAP IS APPROXIMATELY 2" ABOVE GROUND.

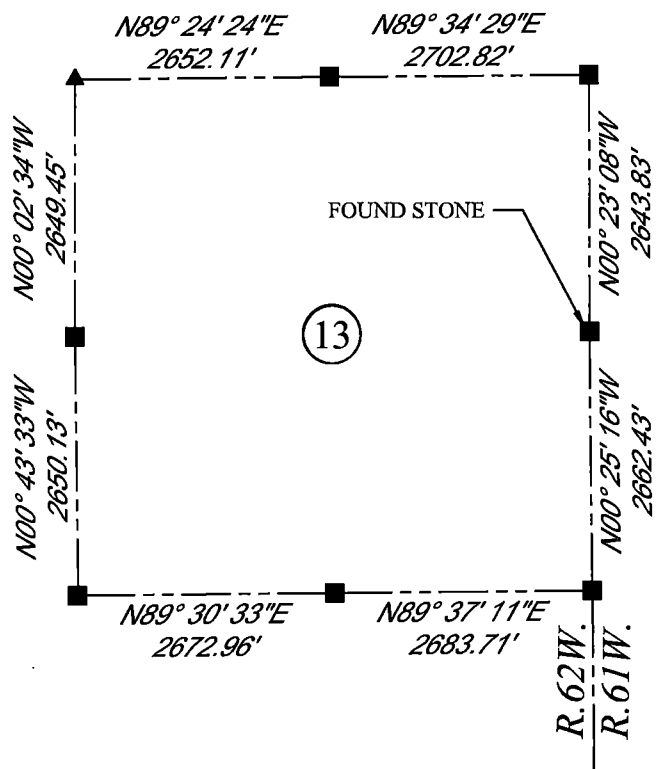


SCALE: NONE
NORTH DETERMINED BY
G.P.S OBSERVATIONS

SET ALUMINUM CAP, STAMPED AS SHOWN



DATE OF FIELD WORK: 10/05/2018 OFFICE REFERENCE: MERIDEN



LEGEND:

- FOUND BLM CAP
- FOUND USFS CAP
- FOUND STONE
- FOUND PRIVATE MONUMENT
- ◆ CALCULATED POSITION
- ▲ SET MONUMENT (LS10245)
- SECTION LINE

CROSS INDEX DIAGRAM

1	2	3	4	5	6	7	8	9	10	11	12	13	14	15	16	17	18	19	20	21	22	23	24	25	
A																									A
B																									B
C		6																							C
D			5																						D
E				4																					E
F					3																				F
G						2																			G
H							1																		H
I																									I
J																									J
K																									K
L																									L
M																									M
N																									N
O																									O
P																									P
Q																									Q
R																									R
S																									S
T																									T
U																									U
V																									V
W																									W
X																									X
Y																									Y
Z																									Z
1	2	3	4	5	6	7	8	9	10	11	12	13	14	15	16	17	18	19	20	21	22	23	24	25	

WOOD
2615 AVIATION DRIVE
SHERIDAN, WY 82801
PH: 307-675-6400



THIS CORNER RECORD WAS
PREPARED BY ME OR UNDER
MY DIRECTION AND
SUPERVISION,
SEAL AND SIGNATURE

