



RECP #: 752771

RECORDED 5/8/2019 AT 1:16 PM BK# 2620 PG# 1813
Debra K. Lee, CLERK OF LARAMIE COUNTY, WY PAGE 1 OF 1

STATE OF WYOMING CORNER RECORD

(In compliance with the CORNER PERPETUATION AND FILING ACT, Wyoming Statutes, 1997 Section 33-29-140, et. seq., and the Rules and Regulations of the Board of Registrations for Professional Engineers and Professional Land Surveyors)

EAST QUARTER CORNER SECTION 14, T. 18 N., R. 62 W., 6TH P.M., LARAMIE COUNTY, WYOMING

GLO: SET A FLINT STONE 15X12X4, 10IN. DEEP, MARKED 1/4 ON W. SIDE FOR 1/4 SEC. COR.

FOUND: FOUND FLINT STONE ON SIDE, NOT SET, APPROX. 15X11X3, NO MARKINGS FOUND.

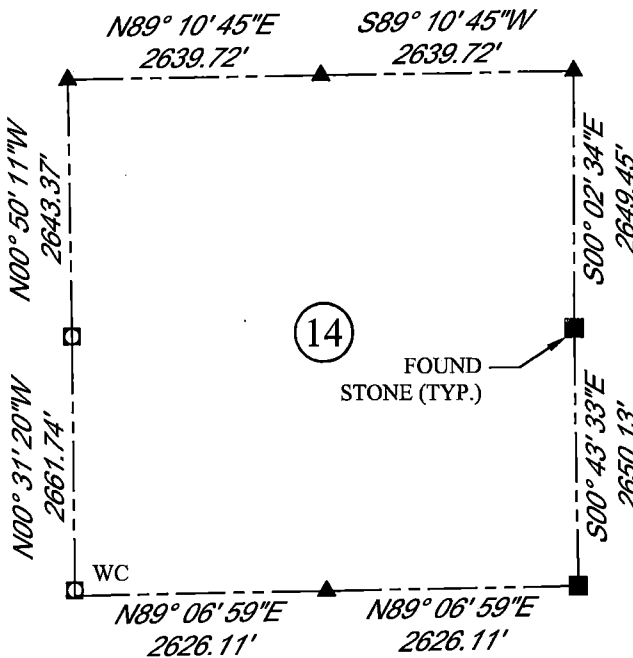
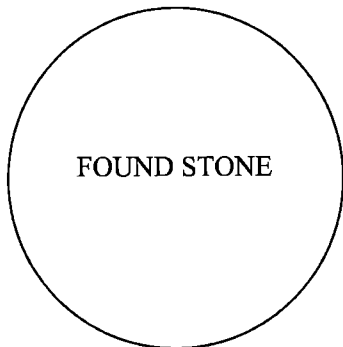


SCALE: NONE

NORTH DETERMINED BY
G.P.S OBSERVATIONS

FOUND: FLINT STONE NOT SET

SET: NOTHING



LEGEND:

- FOUND BLM CAP
- FOUND USFS CAP
- FOUND STONE
- FOUND PRIVATE MONUMENT
- ◇ CALCULATED POSITION
- ▲ SET MONUMENT (LS10245)
- SECTION LINE

DATE OF FIELD WORK: 9/7/2018 OFFICE REFERENCE: MERIDEN

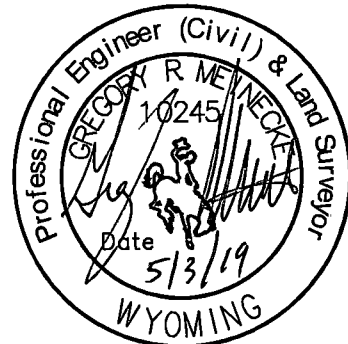
CROSS INDEX DIAGRAM

	1	2	3	4	5	6	7	8	9	10	11	12	13	14	15	16	17	18	19	20	21	22	23	24	25
A																									
B																									
C			6																						
D																									
E																									
F																									
G			7																						
H																									
J																									
K																									
L			18																						
M																									
N																									
O																									
P			19																						
Q																									
R																									
S																									
T																									
U																									
V																									
W																									
X																									
Y																									
Z																									
	1	2	3	4	5	6	7	8	9	10	11	12	13	14	15	16	17	18	19	20	21	22	23	24	25

WOOD
2615 AVIATION DRIVE
SHERIDAN, WY 82801
PH: 307-675-6400

THIS CORNER RECORD WAS
PREPARED BY ME OR UNDER
MY DIRECTION AND
SUPERVISION,
SEAL AND SIGNATURE

wood.



CORNER NAME: EAST QUARTER SECTION: 14 T. 18 N., R. 62 W. ; 6TH P.M. CROSS-INDEX # L-21
SBRPELS/PLSW: MARCH 1994; PLSW JANUARY 1998