



REC# #: 752602  
 RECORDED 5/8/2019 AT 1:07 PM BK# 2620 PG# 1644  
 Debra K. Lee, CLERK OF LARAMIE COUNTY, WY PAGE 1 OF 1

# STATE OF WYOMING CORNER RECORD

(In compliance with the CORNER PERPETUATION AND FILING ACT, Wyoming Statutes, 1997 Section 33-29-140, et. seq., and the Rules and Regulations of the Board of Registrations for Professional Engineers and Professional Land Surveyors)

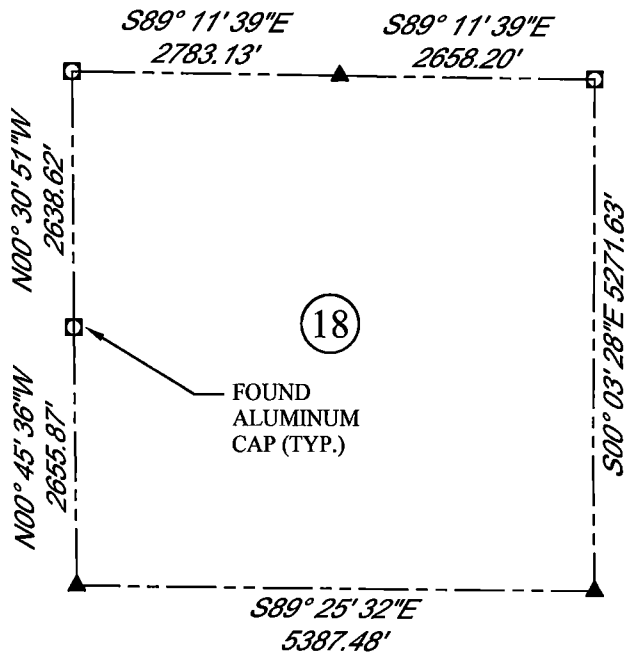
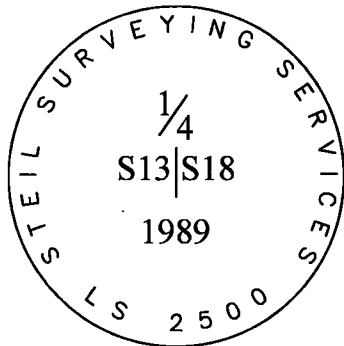
## WEST QUARTER CORNER SECTION 18, T. 18 N., R. 62 W., 6TH P.M., LARAMIE COUNTY, WYOMING

**GLO:** SET A SANDSTONE 16X12X4, 11 IN. DEEP MARKED ON WEST FACE 1/4 FOR 1/4 SEC. CORNER.  
**FOUND:** FIRM SET SANDSTONE APPROX. 14X10X2, NO MARKINGS FOUND. FOUND 2" ALUMINUM CAP NEXT TO STONE.



SCALE: 1" = 2000'  
 NORTH DETERMINED BY  
 G.P.S OBSERVATIONS

FOUND 2" ALUMINUM CAP  
 MARKED AS SHOWN



**LEGEND:**

- FOUND BLM CAP
- ⊕ FOUND USFS CAP
- FOUND STONE
- FOUND PRIVATE MONUMENT
- ◆ CALCULATED POSITION
- ▲ SET MONUMENT (LS10245)
- SECTION LINE

DATE OF FIELD WORK: 08/24/2018 OFFICE REFERENCE: 746049 ----

**CROSS INDEX DIAGRAM**

	1	2	3	4	5	6	7	8	9	10	11	12	13	14	15	16	17	18	19	20	21	22	23	24	25
A																									
B																									
C		6																							
D																									
E																									
F																									
G		7																							
H																									
J																									
K																									
L	●	18																							
M																									
N																									
O																									
P		19																							
Q																									
R																									
S																									
T		30																							
U																									
V																									
W																									
X		31																							
Y																									
Z																									
	1	2	3	4	5	6	7	8	9	10	11	12	13	14	15	16	17	18	19	20	21	22	23	24	25

WOOD  
 2615 AVIATION DRIVE  
 SHERIDAN, WY 82801  
 PH: 307-675-6400



THIS CORNER RECORD WAS  
 PREPARED BY ME OR UNDER  
 MY DIRECTION AND  
 SUPERVISION,  
 SEAL AND SIGNATURE

