



RECP #: 752781

RECORDED 5/8/2019 AT 1:17 PM BK# 2620 PG# 1823
Debra K. Lee, CLERK OF LARAMIE COUNTY, WY PAGE 1 OF 1

STATE OF WYOMING CORNER RECORD

(In compliance with the CORNER PERPETUATION AND FILING ACT, Wyoming Statutes, 1997 Section 33-29-140, et. seq., and the Rules and Regulations of the Board of Registrations for Professional Engineers and Professional Land Surveyors)

WEST QUARTER CORNER SECTION 10, T. 18 N., R. 62 W., 6TH P.M., LARAMIE COUNTY, WYOMING

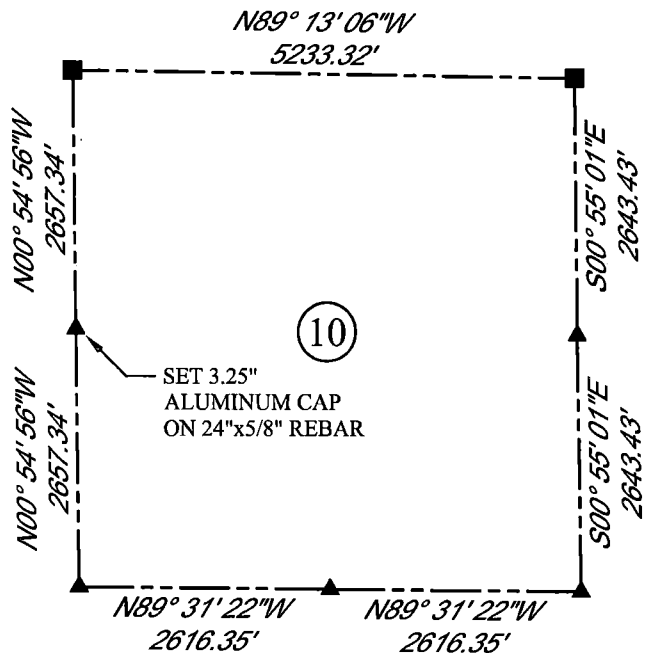
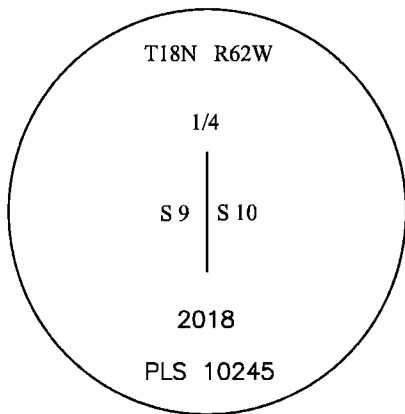
GLO: SET SANDSTONE 16X10X4 10 ins. DEEP, MARKED 1/4 ON WEST SIDE FOR 1/4 SECTION CORNER
FOUND: NOTHING. SET 3.25" ALUMINUM CAP AT PROPORTIONATE (SINGLE) DISTANCE, MARKED AS SHOWN



SCALE: NONE

NORTH DETERMINED BY
G.P.S OBSERVATIONS

SET 3.25" ALUMINUM CAP, STAMPED AS SHOWN 4" ABOVE SURFACE. PLACED A SMALL MOUND OF STONES ON W. SIDE. SET 2 MAG NAILS IN FENCE POSTS APPROXIMATELY +/- 45' NORTHWESTERLY AND +/- 19' WESTERLY.



LEGEND:

- FOUND BLM CAP
- ⊙ FOUND USFS CAP
- FOUND STONE
- ◻ FOUND PRIVATE MONUMENT
- ◇ CALCULATED POSITION
- ▲ SET MONUMENT (LS10245)
- SECTION LINE

DATE OF FIELD WORK: 10/09/2018 OFFICE REFERENCE: MERIDEN

CROSS INDEX DIAGRAM

	1	2	3	4	5	6	7	8	9	10	11	12	13	14	15	16	17	18	19	20	21	22	23	24	25	
A																										
B																										
C			6																							
D																										
E																										
F																										
G			7																							
H																										
J																										
K																										
L			18																							
M																										
N																										
O																										
P			19																							
Q																										
R																										
S																										
T			30																							
U																										
V																										
W																										
X			31																							
Y																										
Z																										
	1	2	3	4	5	6	7	8	9	10	11	12	13	14	15	16	17	18	19	20	21	22	23	24	25	

WOOD
2615 AVIATION DRIVE
SHERIDAN, WY 82801
PH: 307-675-6400



THIS CORNER RECORD WAS
PREPARED BY ME OR UNDER
MY DIRECTION AND
SUPERVISION,
SEAL AND SIGNATURE

