



RECP #: 752782

RECORDED 5/8/2019 AT 1:17 PM BK# 2620 PG# 1824
Debra K. Lee, CLERK OF LARAMIE COUNTY, WY PAGE 1 OF 1

STATE OF WYOMING CORNER RECORD

(In compliance with the CORNER PERPETUATION AND FILING ACT, Wyoming Statutes, 1997 Section 33-29-140, et. seq., and the Rules and Regulations of the Board of Registrations for Professional Engineers and Professional Land Surveyors)

SOUTH QUARTER CORNER SECTION 1, T. 18 N., R. 62 W., 6TH P.M., LARAMIE COUNTY, WYOMING

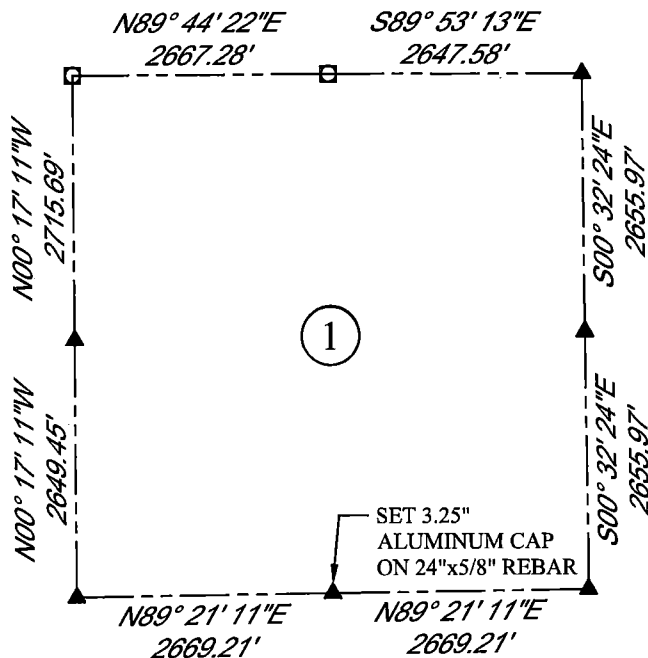
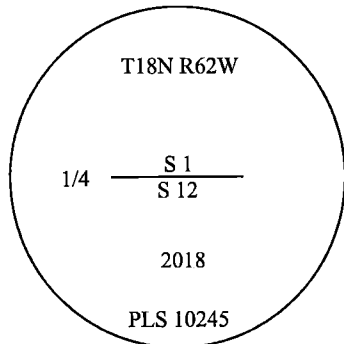
GLO: SET A FLINT STONE 14X12X6, 8IN. DEEP, MARKED 1/4 ON N. SIDE FOR 1/4 SEC. COR.

FOUND: NOTHING. SET ALUMINUM CAP AT PROPORTIONATE (SINGLE) DISTANCE.



SCALE: NONE
NORTH DETERMINED BY
G.P.S OBSERVATIONS

SET 3.25" ALUMINUM CAP ON REBAR, 20IN BELOW SURFACE, STAMPED AS SHOWN. CORNER IS SET IN PLOWED FARM FIELD AND APPROXIMATELY 35' NORTHERLY OF FARM FIELD ROAD.



LEGEND:

- FOUND BLM CAP
- FOUND USFS CAP
- FOUND STONE
- FOUND PRIVATE MONUMENT
- ◆ CALCULATED POSITION
- ▲ SET MONUMENT (LS10245)
- SECTION LINE

DATE OF FIELD WORK: 9/26/2018 OFFICE REFERENCE: MERIDEN

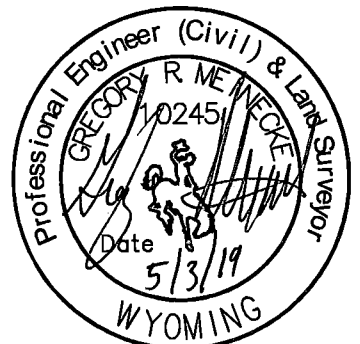
CROSS INDEX DIAGRAM

	1	2	3	4	5	6	7	8	9	10	11	12	13	14	15	16	17	18	19	20	21	22	23	24	25
A																									
B																									
C		6																							
D						5																			
E																									
F																									
G			7																						
H																									
J																									
K																									
L			18																						
M																									
N																									
O																									
P				19																					
Q																									
R																									
S																									
T					30																				
U																									
V																									
W																									
X																									
Y																									
Z																									
	1	2	3	4	5	6	7	8	9	10	11	12	13	14	15	16	17	18	19	20	21	22	23	24	25

WOOD
2615 AVIATION DRIVE
SHERIDAN, WY 82801
PH: 307-675-6400

wood.

THIS CORNER RECORD WAS
PREPARED BY ME OR UNDER
MY DIRECTION AND
SUPERVISION,
SEAL AND SIGNATURE



CORNER NAME: SOUTH QUARTER SECTION: 1 T. 18 N., R. 62 W. ; 6TH P.M. CROSS-INDEX # E-23
SBRPELS/PLSW: MARCH 1994; PLSW JANUARY 1998