



RECP #: 752785

RECORDED 5/8/2019 AT 1:17 PM BK# 2620 PG# 1827  
Debra K. Lee, CLERK OF LARAMIE COUNTY, WY PAGE 1 OF 1

# STATE OF WYOMING CORNER RECORD

(In compliance with the CORNER PERPETUATION AND FILING ACT, Wyoming Statutes, 1997 Section 33-29-140, et. seq., and the Rules and Regulations of the Board of Registrations for Professional Engineers and Professional Land Surveyors)

## SOUTHEAST CORNER SECTION 4, T. 18 N., R. 62 W., 6TH P.M., LARAMIE COUNTY, WYOMING

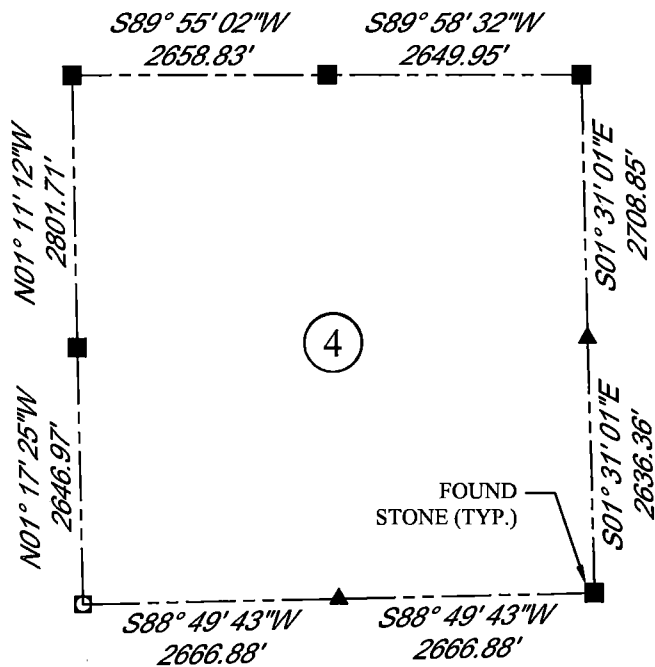
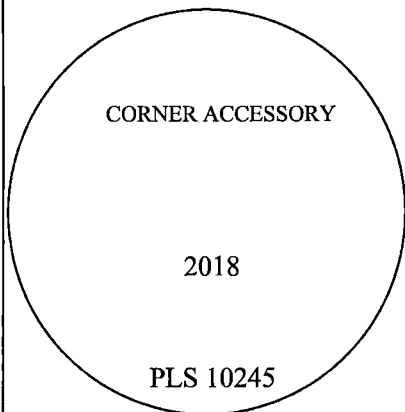
GLO: SET A SANDSTONE 22X15X4 12IN. DEEP WITH 5 NOTCHES ON THE S. SIDE AND 3 NOTCHES ON E. SIDE FOR CORNER TO SECTIONS 3,4,9,10.

FOUND: FIRM SET SANDSTONE APPROX. 6X4. STONE IS 4" ABOVE SURFACE. VISIBLE NOTCHES ON S. FACE.  
SET ALUMINUM CAP NEXT TO STONE MARKED AS SHOWN.



SCALE: NONE  
NORTH DETERMINED BY  
G.P.S OBSERVATIONS

SET: 3.25" ALUMINUM CAP,  
MARKED AS SHOWN 3" ABOVE  
GROUND SURFACE



### LEGEND:

- FOUND BLM CAP
- ⊙ FOUND USFS CAP
- FOUND STONE
- FOUND PRIVATE MONUMENT
- ◆ CALCULATED POSITION
- ▲ SET MONUMENT (LS10245)
- SECTION LINE

DATE OF FIELD WORK: 10/03/2018 OFFICE REFERENCE: MERIDEN

### CROSS INDEX DIAGRAM

1	2	3	4	5	6	7	8	9	10	11	12	13	14	15	16	17	18	19	20	21	22	23	24	25	
A																									A
B																									B
C					6																				C
D						5																			D
E							4																		E
F																									F
G					7																				G
H						8																			H
J																									J
K																									K
L					18																				L
M						17																			M
N							16																		N
O																									O
P					19																				P
Q						20																			Q
R							21																		R
S																									S
T					30																				T
U						29																			U
V							28																		V
W																									W
X					31																				X
Y						32																			Y
Z							33																		Z
	1	2	3	4	5	6	7	8	9	10	11	12	13	14	15	16	17	18	19	20	21	22	23	24	25

WOOD  
2615 AVIATION DRIVE  
SHERIDAN, WY 82801  
PH: 307-675-6400



THIS CORNER RECORD WAS  
PREPARED BY ME OR UNDER  
MY DIRECTION AND  
SUPERVISION,  
SEAL AND SIGNATURE

