



RECP #: 752716

RECORDED 5/8/2019 AT 1:13 PM BK# 2620 PG# 1758  
Debra K. Lee, CLERK OF LARAMIE COUNTY, WY PAGE 1 OF 1

# STATE OF WYOMING CORNER RECORD

(In compliance with the CORNER PERPETUATION AND FILING ACT, Wyoming Statutes, 1997 Section 33-29-140, et. seq., and the Rules and Regulations of the Board of Registrations for Professional Engineers and Professional Land Surveyors)

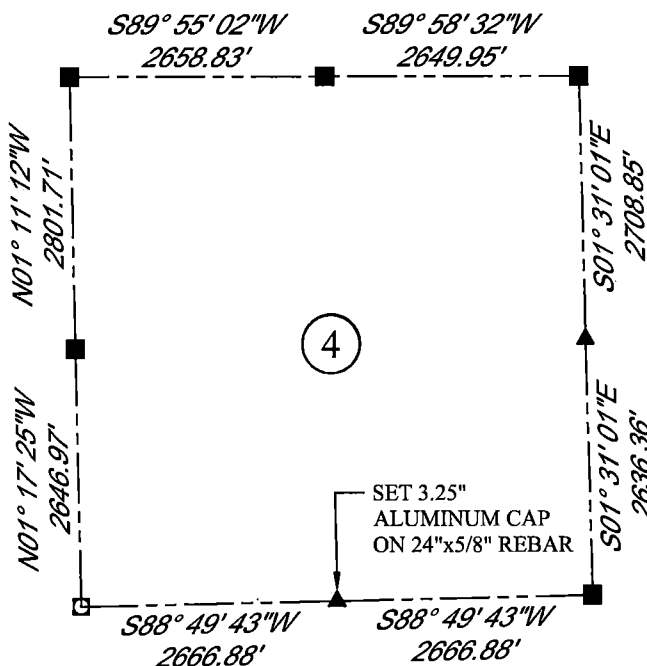
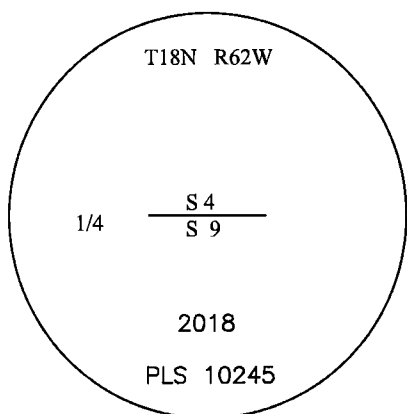
## SOUTH QUARTER CORNER SECTION 4, T. 18 N., R. 62 W., 6TH P.M., LARAMIE COUNTY, WYOMING

GLO: SET SANDSTONE 20x16x4, 12 ins. DEEP, MARKED 1/4 ON NORTH SIDE FOR 1/4 SECTION CORNER  
FOUND: NOTHING. SET 3.25" ALUMINUM CAP AT PROPORTIONATE (SINGLE) DISTANCE, MARKED AS SHOWN



SCALE: NONE  
NORTH DETERMINED BY  
G.P.S OBSERVATIONS

SET 3.25" ALUMINUM CAP, STAMPED AS SHOWN  
SET FIBERGLASS ROD NEXT TO MONUMENT



### LEGEND:

- FOUND BLM CAP
- ⊕ FOUND USFS CAP
- FOUND STONE
- FOUND PRIVATE MONUMENT
- ◆ CALCULATED POSITION
- ▲ SET MONUMENT (LS10245)
- SECTION LINE

DATE OF FIELD WORK: 10/09/2018 OFFICE REFERENCE: MERIDEN

### CROSS INDEX DIAGRAM

	1	2	3	4	5	6	7	8	9	10	11	12	13	14	15	16	17	18	19	20	21	22	23	24	25	
A																										
B																										
C			6																							
D																										
E																										
F																										
G			7																							
H																										
J																										
K																										
L			18																							
M																										
N																										
O																										
P			19																							
Q																										
R																										
S																										
T			30																							
U																										
V																										
W																										
X			31																							
Y																										
Z																										
	1	2	3	4	5	6	7	8	9	10	11	12	13	14	15	16	17	18	19	20	21	22	23	24	25	

WOOD  
2615 AVIATION DRIVE  
SHERIDAN, WY 82801  
PH: 307-675-6400

# wood.

THIS CORNER RECORD WAS  
PREPARED BY ME OR UNDER  
MY DIRECTION AND  
SUPERVISION,  
SEAL AND SIGNATURE

