



REC# : 752715

RECORDED 5/8/2019 AT 1:13 PM BK# 2620 PG# 1757
Debra K. Lee, CLERK OF LARAMIE COUNTY, WY PAGE 1 OF 1

STATE OF WYOMING CORNER RECORD

(In compliance with the CORNER PERPETUATION AND FILING ACT, Wyoming Statutes, 1997 Section 33-29-140, et. seq., and the Rules and Regulations of the Board of Registrations for Professional Engineers and Professional Land Surveyors)

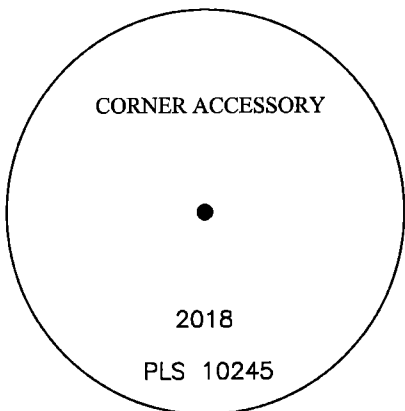
WEST QUARTER CORNER SECTION 4, T. 18 N., R. 62 W., 6TH P.M., LARAMIE COUNTY, WYOMING

GLO: SET GRANITE STONE 12x8x6, 10 ins. DEEP, MARKED 1/4 ON WEST SIDE FOR 1/4 SECTION CORNER
FOUND: SET STONE WITH 1/4 MARKED ON WEST FACE. SET 3.25" ALUMINUM CAP ON SOUTH SIDE OF STONE,
MARKED AS SHOWN

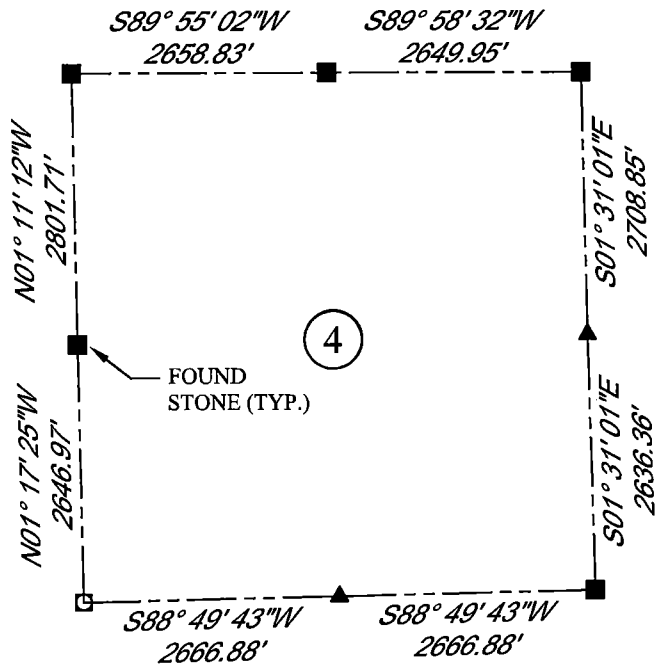


SCALE: NONE
NORTH DETERMINED BY
G.P.S OBSERVATIONS

SET 3.25" ALUMINUM CAP, STAMPED AS SHOWN



DATE OF FIELD WORK: 10/03/2018 OFFICE REFERENCE: MERIDEN



LEGEND:

- FOUND BLM CAP
- FOUND USFS CAP
- FOUND STONE
- FOUND PRIVATE MONUMENT
- ◆ CALCULATED POSITION
- ▲ SET MONUMENT (LS10245)
- SECTION LINE

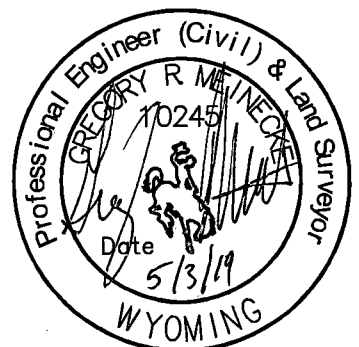
CROSS INDEX DIAGRAM

	1	2	3	4	5	6	7	8	9	10	11	12	13	14	15	16	17	18	19	20	21	22	23	24	25
A																									
B																									
C		6		5		●	4		3		2		1												
D																									
E																									
F																									
G		7		8		9		10		11		12													
H																									
J																									
K																									
L		18		17		16		15		14		13													
M																									
N																									
O																									
P		19		20		21		22		23		24													
Q																									
R																									
S																									
T		30		29		28		27		26		25													
U																									
V																									
W																									
X		31		32		33		34		35		36													
Y																									
Z																									

WOOD
2615 AVIATION DRIVE
SHERIDAN, WY 82801
PH: 307-675-6400

wood.

THIS CORNER RECORD WAS
PREPARED BY ME OR UNDER
MY DIRECTION AND
SUPERVISION,
SEAL AND SIGNATURE



CORNER NAME: WEST QUARTER SECTION: 4 T: 18 N., R. 62 W. ; 6TH P.M. CROSS-INDEX # C-9
SBRPELS/PLSW: MARCH 1994; PLSW JANUARY 1998