



RECP #: 752625

RECORDED 5/8/2019 AT 1:09 PM BK# 2620 PG# 1667  
Debra K. Lee, CLERK OF LARAMIE COUNTY, WY PAGE 1 OF 1

# STATE OF WYOMING CORNER RECORD

(In compliance with the CORNER PERPETUATION AND FILING ACT, Wyoming Statutes, 1997 Section 33-29-140, et. seq., and the Rules and Regulations of the Board of Registrations for Professional Engineers and Professional Land Surveyors)

## NORTH QUARTER CORNER SECTION 3, T. 18 N., R. 62 W., 6TH P.M., LARAMIE COUNTY, WYOMING

GLO: SET A GRANITE STONE 14X10X5, 10IN. DEEP MARKED ON THE NORTH FACE 1/4 FOR 1/4 SEC. COR.

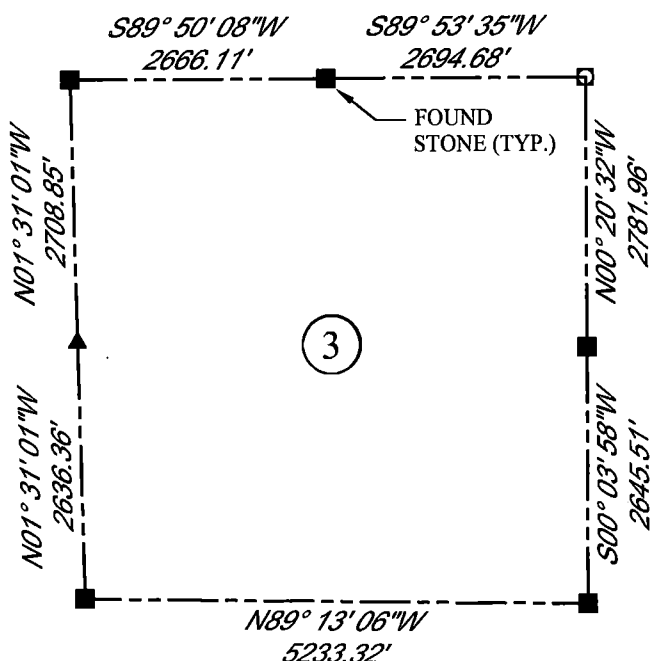
FOUND: FIRM SET GRANITE STONE APPROX. 14X8X6, 1/4 MARKED ON NORTH FACE. SET ALUMINUM CAP ON SOUTH SIDE OF STONE.



SCALE: NONE

NORTH DETERMINED BY G.P.S OBSERVATIONS

SET 3.25" ALUMINUM CAP ON REBAR, STAMPED AS SHOWN



### LEGEND:

- FOUND BLM CAP
- FOUND USFS CAP
- FOUND STONE
- FOUND PRIVATE MONUMENT
- ◆ CALCULATED POSITION
- ▲ SET MONUMENT (LS10245)
- SECTION LINE

DATE OF FIELD WORK: 9/8/2018 OFFICE REFERENCE: MERIDEN

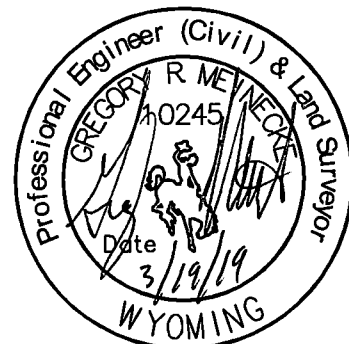
### CROSS INDEX DIAGRAM

	1	2	3	4	5	6	7	8	9	10	11	12	13	14	15	16	17	18	19	20	21	22	23	24	25
A																									
B																									
C		6																							
D			5																						
E				4																					
F					3																				
G		7																							
H			8																						
J				9																					
K					10																				
L		18																							
M			17																						
N				16																					
O					15																				
P		19																							
Q			20																						
R				21																					
S					22																				
T		30																							
U			29																						
V				28																					
W					27																				
X		31																							
Y			32																						
Z				33																					
	1	2	3	4	5	6	7	8	9	10	11	12	13	14	15	16	17	18	19	20	21	22	23	24	25

WOOD  
2615 AVIATION DRIVE  
SHERIDAN, WY 82801  
PH: 307-675-6400

THIS CORNER RECORD WAS PREPARED BY ME OR UNDER MY DIRECTION AND SUPERVISION, SEAL AND SIGNATURE

# wood.



CORNER NAME: NORTH QUARTER SECTION: 3 T. 18 N., R. 62 W. ; 6TH P.M. CROSS-INDEX # A-15  
SBRPELS/PLSW: MARCH 1994; PLSW JANUARY 1998