



REC# #: 752623

RECORDED 5/8/2019 AT 1:09 PM BK# 2620 PG# 1665
Debra K. Lee, CLERK OF LARAMIE COUNTY, WY PAGE 1 OF 1

STATE OF WYOMING CORNER RECORD

(In compliance with the CORNER PERPETUATION AND FILING ACT, Wyoming Statutes, 1997 Section 33-29-140, et. seq., and the Rules and Regulations of the Board of Registrations for Professional Engineers and Professional Land Surveyors)

NORTH QUARTER CORNER SECTION 4, T. 18 N., R. 62 W., 6TH P.M., LARAMIE COUNTY, WYOMING

GLO: SET A GRANITE STONE 12X10X4, 8IN. DEEP MARKED 1/4 ON NORTH FACE FOR 1/4 SEC. COR.

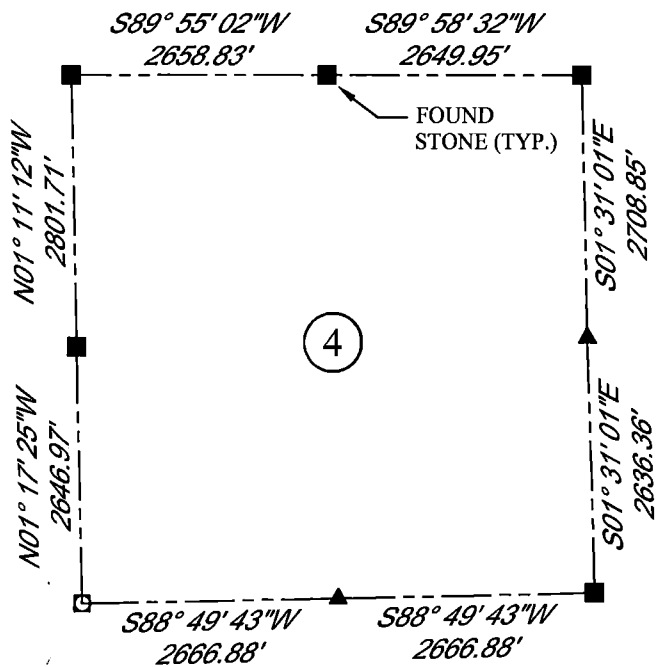
FOUND: FOUND GRANITE STONE ON SIDE, NOT SET, APPROX. 15X8X4 WITH A VISIBLE 1/4 ON FACE . STONE IS APPROX. 1.5 FT ON SOUTH SIDE OF EAST AND WEST FENCE LINE.



SCALE: NONE
NORTH DETERMINED BY
G.P.S OBSERVATIONS

FOUND GRANITE STONE NOT SET

SET NOTHING



LEGEND:

- FOUND BLM CAP
- FOUND USFS CAP
- FOUND STONE
- FOUND PRIVATE MONUMENT
- ◇ CALCULATED POSITION
- ▲ SET MONUMENT (LS10245)
- SECTION LINE

DATE OF FIELD WORK: 9/8/2018 OFFICE REFERENCE: MERIDEN

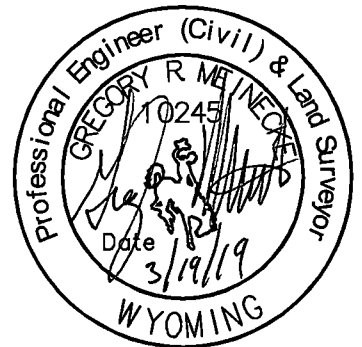
CROSS INDEX DIAGRAM

	1	2	3	4	5	6	7	8	9	10	11	12	13	14	15	16	17	18	19	20	21	22	23	24	25
A																									
B																									
C		6		5		4		3		2		1													
D																									
E																									
F																									
G		7		8		9		10		11		12													
H																									
J																									
K																									
L		18		17		16		15		14		13													
M																									
N																									
O																									
P		19		20		21		22		23		24													
Q																									
R																									
S																									
T		30		29		28		27		26		25													
U																									
V																									
W																									
X		31		32		33		34		35		36													
Y																									
Z																									

WOOD
2615 AVIATION DRIVE
SHERIDAN, WY 82801
PH: 307-675-6400



THIS CORNER RECORD WAS
PREPARED BY ME OR UNDER
MY DIRECTION AND
SUPERVISION,
SEAL AND SIGNATURE



CORNER NAME: NORTH QUARTER SECTION: 4 T. 18 N., R. 62 W. ; 6TH P.M. CROSS-INDEX # A-11
SBRPELS/PLSW: MARCH 1994; PLSW JANUARY 1998