

CERTIFIED LAND CORNER RECORDATION

DESCRIPTION OF CORNER EVIDENCE FOUND, AND ORIGINAL RECORD (if known)

LOCATION

S. 29	S. 28
S. 32	S. 33

 T.17N., R.60W.

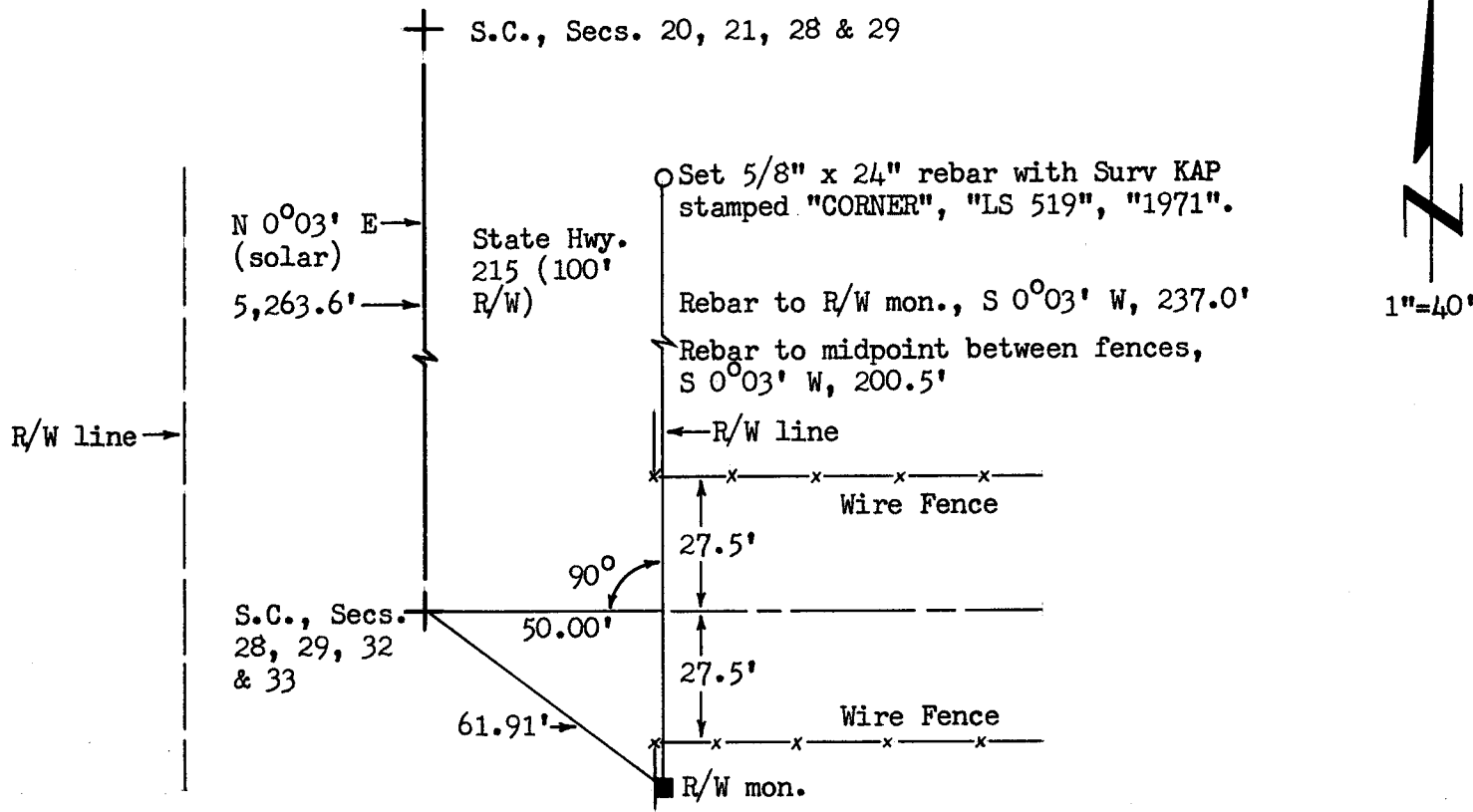
Corner falls in the pavement of Wyoming State Highway 215.

No visual evidence of corner monument found.

DESCRIPTION OF MONUMENT AND ACCESSORIES ESTABLISHED
 TO PERPETUATE THE ORIGINAL LOCATION OF THIS CORNER:

Corner was not remonumented at the time of this survey (12 November 1971).
 Corner position determined from existing fences and a Wyoming Highway
 Department concrete R/W monument with brass cap (unstamped) which bears
 SE'ly, 61.91 feet distant.

SKETCH, WITH COURSE AND DISTANCE TO ADJACENT CORNER IF DETERMINED IN THIS SURVEY.
 (May Sketch or Paste Reproduction on Reverse Side.)



I, R.L. Hudson certify that I have carefully performed ~~or reviewed~~ the work done on the diagrammed corner as reported on this recordation form and approve the same.

R.L. Hudson Wyoming L.S. No. 519
 Signature of Surveyor Registration No.

STATE OF WYOMING,
 Office of Clerk and Recorder,
 County of Laramie

This "corner record" was filed for record on the 15th day of November, 19 71, was noted on the cross-index plat and is assigned page No. 17-60, in book No. ONE.

Jody B. Hillman *JW*
 County Official

Cross Index No.	_____ T.	_____ R.	_____ Mer.
	_____ T.	_____ R.	_____ Mer.
	_____ T.	_____ R.	_____ Mer.
	_____ T.	_____ R.	_____ Mer.
	_____ T.	_____ R.	_____ Mer.
	_____ T.	_____ R.	_____ Mer.
	_____ T.	_____ R.	_____ Mer.



The State of Wyoming }
County of Laramie } SS

This instrument was filed for record
at 9:44 o'clock P. M. on the

15 day of Mar
A. D. 1971 and duly recorded in

Book on page

John B. Williams

County Clerk & Ex-Officio Register of Deeds
By..... Deputy

R. S. Anderson
1104 Logan
Chey