

R-5

CERTIFIED LAND CORNER RECORDATION

T17N, R60W

DESCRIPTION OF CORNER EVIDENCE FOUND, AND ORIGINAL RECORD (If known)

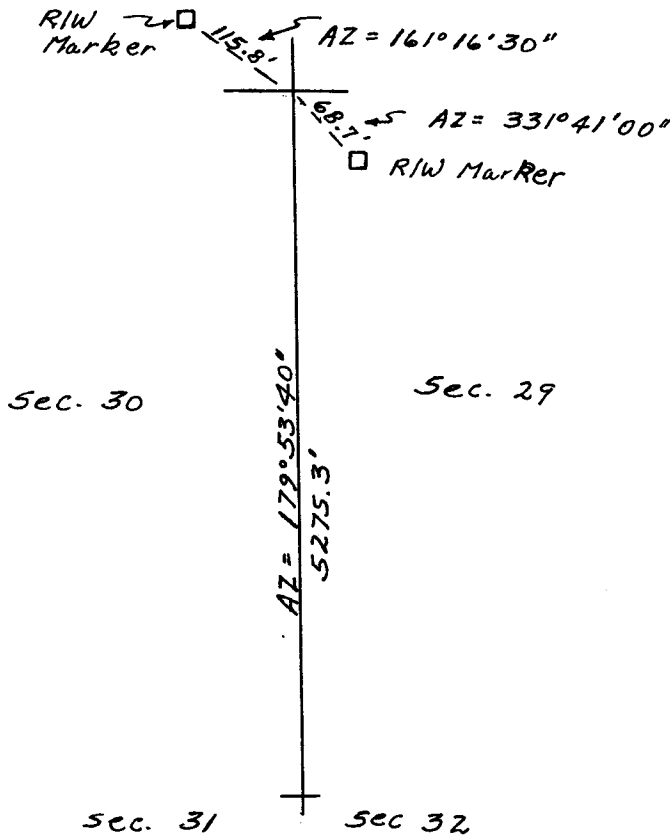
19	20
30	29

Found Railroad spike driven at the visual Centerline intersections of Highway 216 and a North-South dirt road.

DESCRIPTION OF MONUMENT AND ACCESSORIES ESTABLISHED TO PERPETUATE THE ORIGINAL LOCATION OF THIS CORNER:

None.

SKETCH, WITH COURSE AND DISTANCE TO ADJACENT CORNER IF DETERMINED IN THIS SURVEY. (May Sketch or Paste Reproduction on Reverse Side.)



I, Edward C. Fry certify that I have carefully performed or reviewed the work done on the diagrammed corner as reported on this recordation form and approve the same.

Edward C Fry Wyo. #662  
Signature of Surveyor Registration No.

STATE OF WYOMING,  
Office of Clerk and Recorder,  
County of Taramie

This "corner record" was filed for record on the 9 day of Aug, 1977, was noted on the cross-index plat and is assigned page No. \_\_\_\_\_, in book No. \_\_\_\_\_.

James C Whitehead  
County Official  
Cross Index No. R-5 T. 17 R. 60 Mer.  
\_\_\_\_ T. \_\_\_\_\_ R. \_\_\_\_\_ Mer.  
\_\_\_\_ T. \_\_\_\_\_ R. \_\_\_\_\_ Mer.  
\_\_\_\_ T. \_\_\_\_\_ R. \_\_\_\_\_ Mer.  
\_\_\_\_ T. \_\_\_\_\_ R. \_\_\_\_\_ Mer.  
\_\_\_\_ T. \_\_\_\_\_ R. \_\_\_\_\_ Mer.  
\_\_\_\_ T. \_\_\_\_\_ R. \_\_\_\_\_ Mer.