

CERTIFIED LAND CORNER RECORDATION

LOCATION

11
Wyo 14 Nebr

T 17 N
R 60 W
6th P.M.

DESCRIPTION OF CORNER EVIDENCE FOUND, AND ORIGINAL RECORD (If known)

Found brass cap monument set by U.S. Land Office, stamped as shown on the left. Monument leaning.

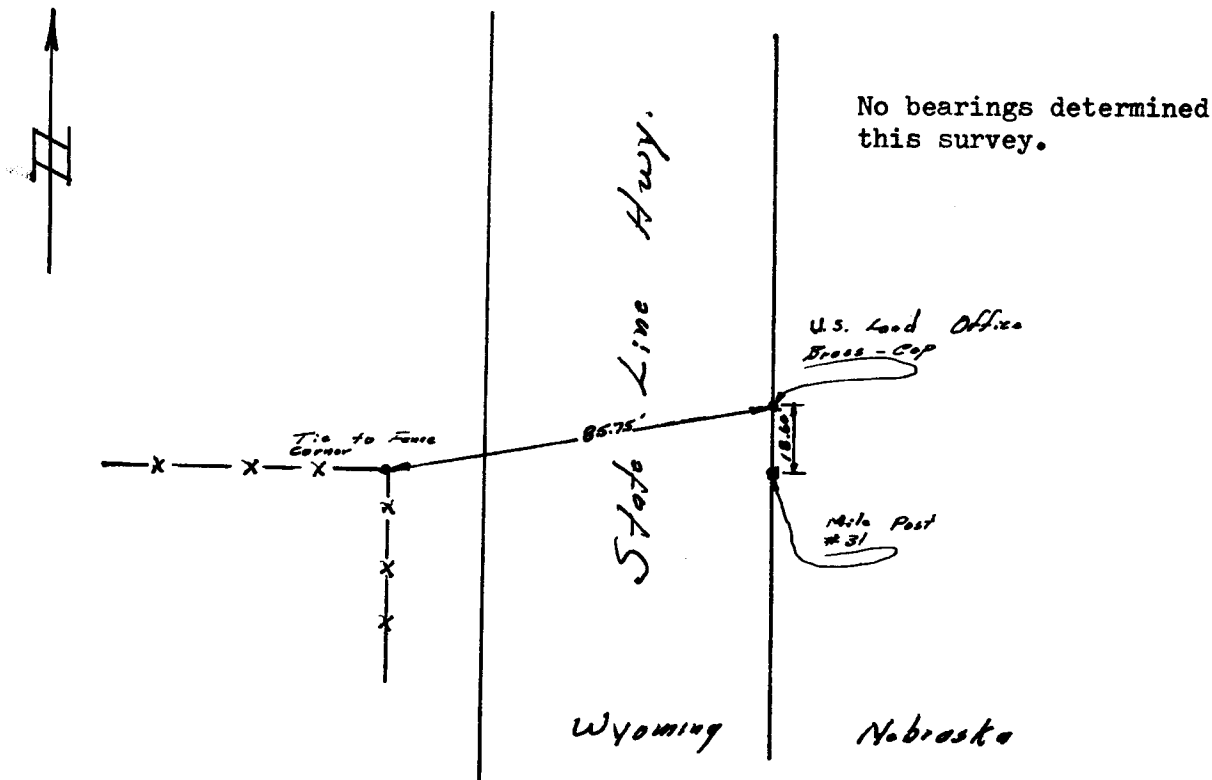
G.L.O.. record - same as above.

DESCRIPTION OF MONUMENT AND ACCESSORIES ESTABLISHED TO PERPETUATE THE ORIGINAL LOCATION OF THIS CORNER:

Straightened monument.

Witnessed to mile post and to fence corner, (see sketch).

SKETCH, WITH COURSE AND DISTANCE TO ADJACENT CORNER IF DETERMINED IN THIS SURVEY. (May Sketch or Paste Reproduction on Reverse Side.)



I, Robert C. Corbet certify that I have carefully performed or reviewed the work done on the diagrammed corner as reported on this recordation form and approve the same.

Robert C. Corbet
Signature of Surveyor

495
Registration No.

STATE OF WYOMING,
Office of Clerk and Recorder,
County of Thomson

This "corner record" was filed for record on the 6 day of January, 1925, was noted on the cross-index plat and is assigned page No. _____, in book No. _____.

James C. Whitehead
County Official

Cross Index No. _____	T. _____	R. _____	Mer. _____
_____	T. _____	R. _____	Mer. _____
_____	T. _____	R. _____	Mer. _____
_____	T. _____	R. _____	Mer. _____
_____	T. _____	R. _____	Mer. _____
_____	T. _____	R. _____	Mer. _____
_____	T. _____	R. _____	Mer. _____

Photographed

Indexed *FB*

Posted

Assessor

The State of Wyoming } ss
 County of Laramie

This instrument was filed for record
 at 128 o'clock P.M. on the
6 day of January
 A. D. 1975 and duly recorded in
 Book _____ on page _____

James O. Williams
 County Clerk & Ex-Officio Register of Deeds
 Deputy