

State of Wyoming Corner Record

(In compliance with the *CORNER PERPETUATION AND FILING ACT*, Wyoming Statutes, 1997 Section 33-29-140 et. se., and the Rules and Regulations of the Board of Professional Engineers and Professional Land Surveyors)

Reverse side of this form may be used if more space is needed.

Record of original survey and citation of source of historical information (if corner is lost or obliterated). Description of corner monumentation evidence found and/or monument and accessories established to perpetuate the location of this corner. Sketch of relative location of monument, accessories, and reference points with course and distance to adjacent corner(s) (if determined in this survey). Method and rationale for re-establishment of lost or obliterated corner.

RECORD: G.L.O. survey by Henry G. Hay in 1873 "80.00 ch. Limestone 15x9x4, set 10 inches deep, marked 4 notches on South and 3 notches on East"

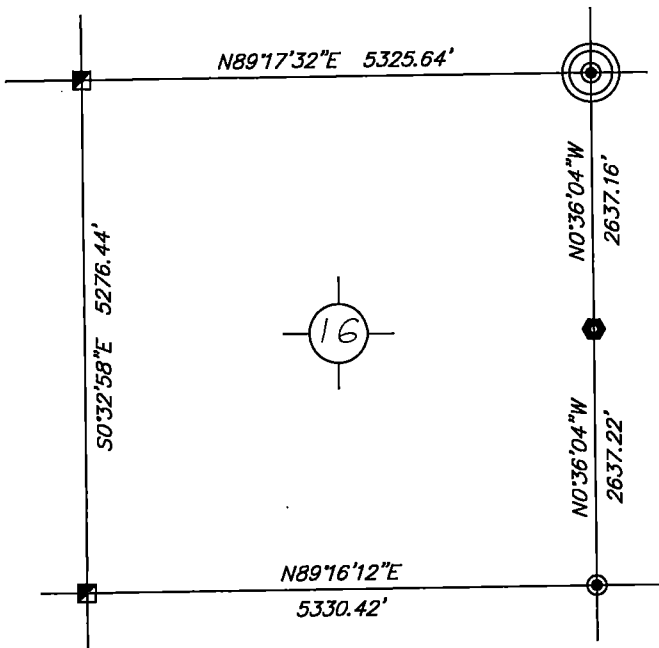
FOUND: 2.0 inch Alum. cap on 5/8 inch rebar, buried 0.4 ft. below county gravel road, at intersection of centerline of gravel road and centerline of east & west farm roads; set by PLS# 2500 (John Steil).

Re-monumentation: nothing required

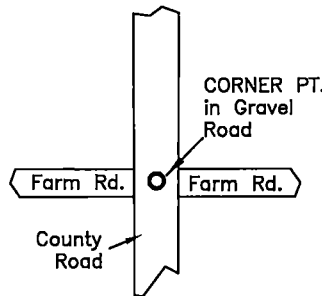
| Point # | North | East | Elev. |
|---------|-----------|-----------|---------|
| 1760162 | 347062.78 | 956057.81 | 5317.14 |

NAD83, position:

NOTE:
BEARINGS AND DISTANCES SHOWN HEREON ARE BASED UPON GRID USING NAD83 WYOMING EAST ZONE AND TRIMBLE R8 GPS OBSERVATION

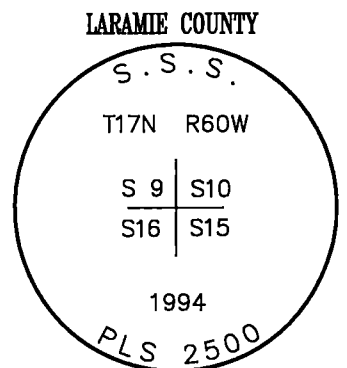


SKETCH



Monument Location

corner referenced this record =

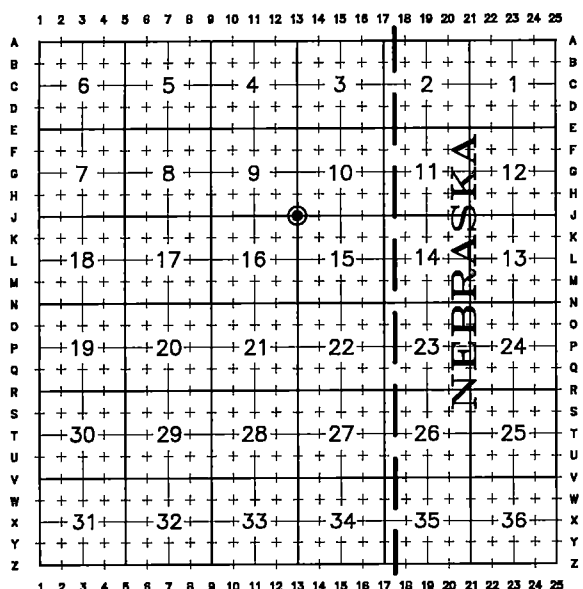


Monument Inscription

Date of Field Work: June 21, 2019

Office Reference: DRG-21930, Pt.1760162

Cross Index Plat



Firm/Agency, Address

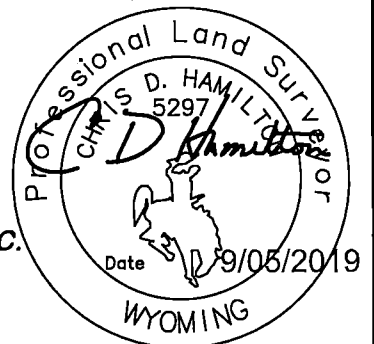
this corner record provided by:

**HAMILTON
LAND
SURVEYING**

UNDER CONTRACT TO:

DRG **RIFFIN & ASSOCIATES, INC.**
1414 ELK ST., SUITE 202
ROCK SPRINGS, WY 82901
(307) 362-5028

This corner record was prepared by me or under my direction and supervision.
SEAL & SIGNATURE



This on RECP #: 761813
and RECORDED 9/18/2019 AT 1:54 PM BK# 2638 PG# 1495
Debra K. Lee, CLERK OF LARAMIE COUNTY, WY PAGE 1 OF 1

Debra Lee _____ Deputy
County Clerk

STATE of WYOMING, Office of Clerk & Recorder, County of Laramie
this block provided for county filing documentation

Corner Name: Northeast, Section: 16, T 17N, R 60W, 6th P.M., Cross-Index No.: J-13

SBRPEPLS/PLSW: March 1994; PLSW January 1998

County: LARAMIE, Wyoming