

State of Wyoming Corner Record

(In compliance with the *CORNER PERPETUATION AND FILING ACT*, Wyoming Statutes, 1997 Section 33-29-140 et. se., and the Rules and Regulations of the Board of Professional Engineers and Professional Land Surveyors)

Reverse side of this form may be used if more space is needed.

Record of original survey and citation of source of historical information (if corner is lost or obliterated). Description of corner monumentation evidence found and/or monument and accessories established to perpetuate the location of this corner. Sketch of relative location of monument, accessories, and reference points with course and distance to adjacent corner(s) (if determined in this survey). Method and rationale for re-establishment of lost or obliterated corner.

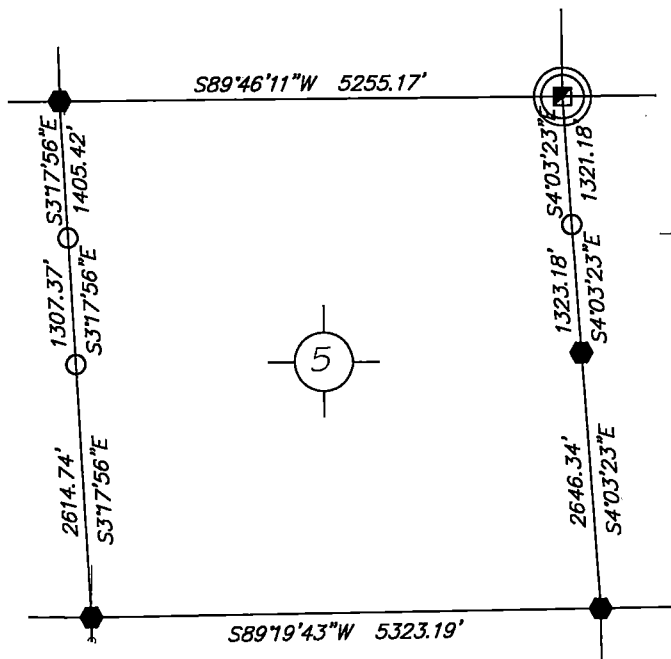
RECORD: G.L.O. survey by J. Wesley Harmond in 1873 "80.00 ch. Limestone 24x10x3, set 15 inches deep, marked 2 notches on West and 4 on East"

FOUND: 5/8 inch rebar buried 0.1 below gravel road surface.

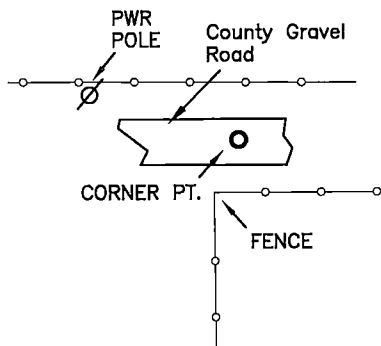
Re-monumentation: nothing

	Point #	North	East	Elev.
NAD83, position:	1760052	357566.76	950296.25	5389.28

NOTE:
BEARINGS AND DISTANCES SHOWN HEREON ARE
BASED UPON GRID USING NAD83 WYOMING EAST
ZONE AND TRIMBLE R8 GPS OBSERVATION



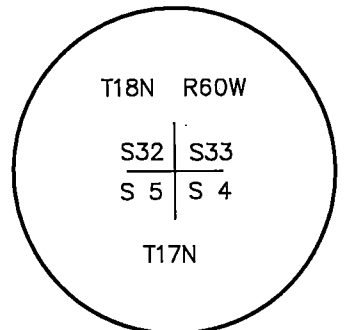
SKETCH



Monument Location

corner referenced this record =

LARAMIE COUNTY

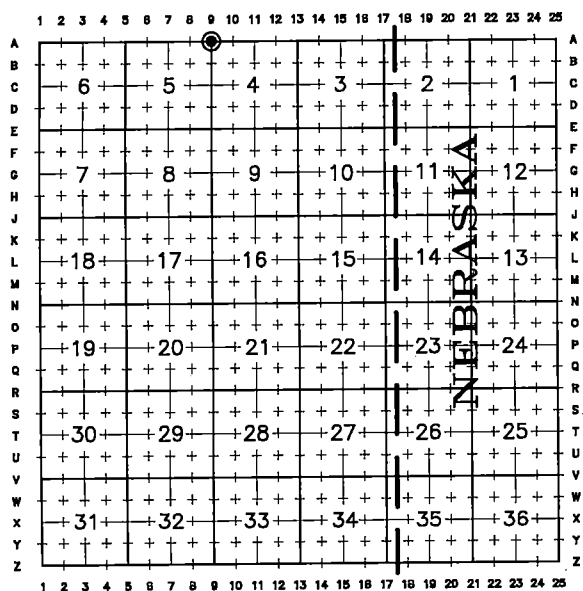


No Marking
Monument Reference

Date of Field Work: May 9 & Aug 4, 2019

Office Reference: DRG-21927, Pt.1760052

Cross Index Plat



Firm/Agency, Address

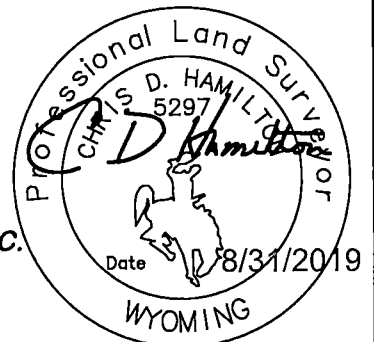
this corner record provided by:

**HAMILTON
LAND
SURVEYING**

UNDER CONTRACT TO:

DRG **RIFFIN & ASSOCIATES, INC.**
1414 ELK ST., SUITE 202
ROCK SPRINGS, WY 82901
(307) 362-5028

This corner record was prepared by me
or under my direction and supervision.
SEAL & SIGNATURE



RECP #: 761807
RECORDED 9/18/2019 AT 1:54 PM BK# 2638 PG# 1489
Debra K. Lee, CLERK OF LARAMIE COUNTY, WY PAGE 1 OF 1
Debra Lee _____ Deputy
County Clerk
STATE of WYOMING, Office of Clerk & Recorder, County of Laramie
this block provided for county filing documentation

Corner Name: Northeast, Section: 5, T 17N, R 60W, 6th P.M., Cross-Index No.: A-09

SBRPEPLS/PLSW: March 1994; PLSW January 1998

County: LARAMIE, Wyoming