

State of Wyoming Corner Record

(In compliance with the CORNER PERPETUATION AND FILING ACT, Wyoming Statutes, 1997 Section 33-29-140 et. seq., and the Rules and Regulations of the Board of Professional Engineers and Professional Land Surveyors)

Reverse side of this form may be used if more space is needed.

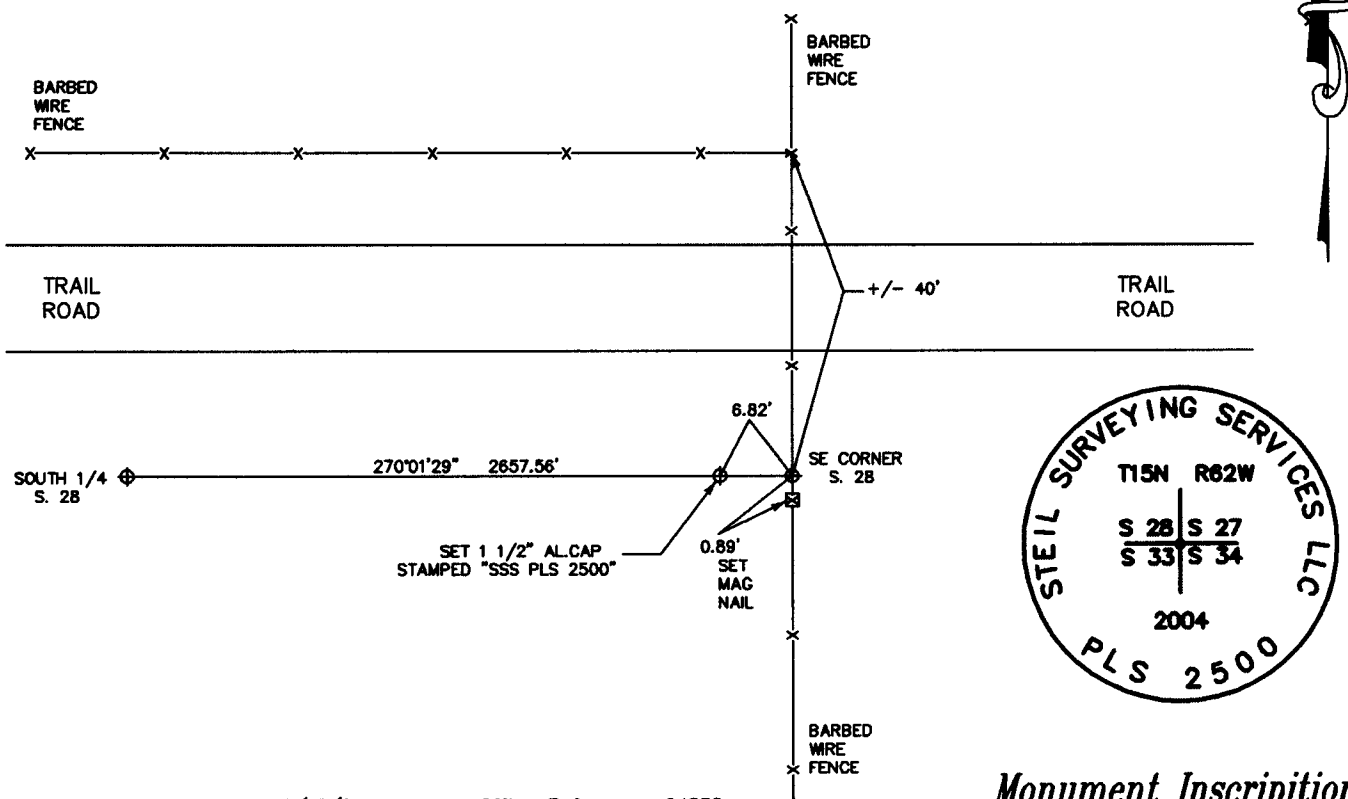
Record of original survey and citation of source of historical information (if corner is lost or obliterated). Description of corner monumentation evidence found and/or monument and accessories established to perpetuate the location of this corner. Sketch of relative location of monument, accessories, and reference points with course and distance to adjacent corner(s) (if determined in this survey). Method and rationale for reestablishment of lost or obliterated corner.

RECORD: UNKNOWN

MONUMENT FOUND: NO MONUMENT FOUND. HELD POSITION OF OLD FENCE CORNER POST.

MONUMENT SET: SET 5/8" X 24" REBAR WITH A 3 1/4" ALUMINUM CAP, PROJECTING 0.4' ABOVE GROUND SURFACE IN A N-S FENCELINE. CAP IS STAMPED ABOVE AS SHOWN BELOW.

REFERENCES: MONUMENT LIES 40' SOUTH OF A FENCE CORNER RUNNING N-S-W AND 30' SOUTH OF CENTERLINE OF TRAIL ROAD. REFERENCES ARE SHOWN BELOW.



Date of Field Work: 5/13/04

Office Reference: 04253

Monument Inscription

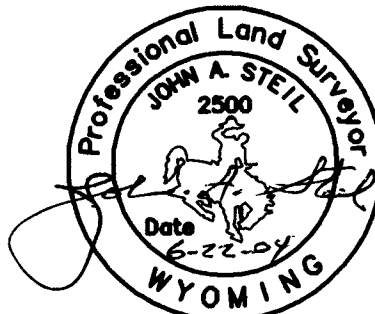
Cross Index Plat

Firm/Agency, Address

STEIL SURVEYING SERVICES LLC
1102 WEST 19th STREET
CHEYENNE WY 82001
 Telephone Number: **(307) 634-7273**

This corner record was prepared by me or under my direction and supervision.

SEAL & SIGNATURE



	1	2	3	4	5	6	7	8	9	10	11	12	13	14	15	16	17	18	19	20	21	22	23	24	25		
A																											A
B																											B
C			6																								C
D					5																						D
E																											E
F																											F
G				7																							G
H																											H
J																											J
K																											K
L					18																						L
M																											M
N																											N
O																											O
P						19																					P
Q																											Q
R																											R
S																											S
T							30																				T
U																											U
V																											V
W																											W
X								31																			X
Y																											Y
Z																											Z
	1	2	3	4	5	6	7	8	9	10	11	12	13	14	15	16	17	18	19	20	21	22	23	24	25		

Corner Name SE CORNER Section 28, T 15 N, R 62 W, 6th P.M.

Cross-Index No.: V-13

County: LARAMIE Wyoming

SBRPEPLS/PLSW: March 1994; PLSW January 1998