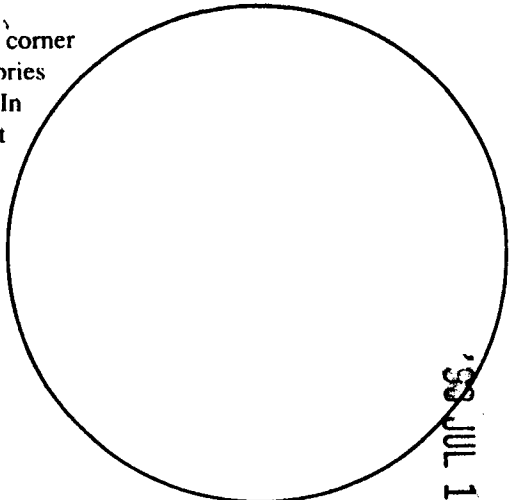


# Wyoming Certified Land Corner Recordation Certificate

*This form is to be completed in accordance with W.S. 36-11-101, printed in black ink or typed, and shall be for one individual corner.*

Describe below, or show in sketch attached to this form, the corner evidence found. Include condition and type of monument, accessories and ties. Describe any maintenance or rehabilitation performed. In the circle to the right, show monument inscription. If monument is determined lost or obliterated, restate the GLO or BLM original field note record; describe or show the procedure used to reestablish the corner and all data as above for a found monument.



Field Date Nov. 18, 1992 Office Reference 2502

EVIDENCE FOUND: Buried 1/2" iron pipe.

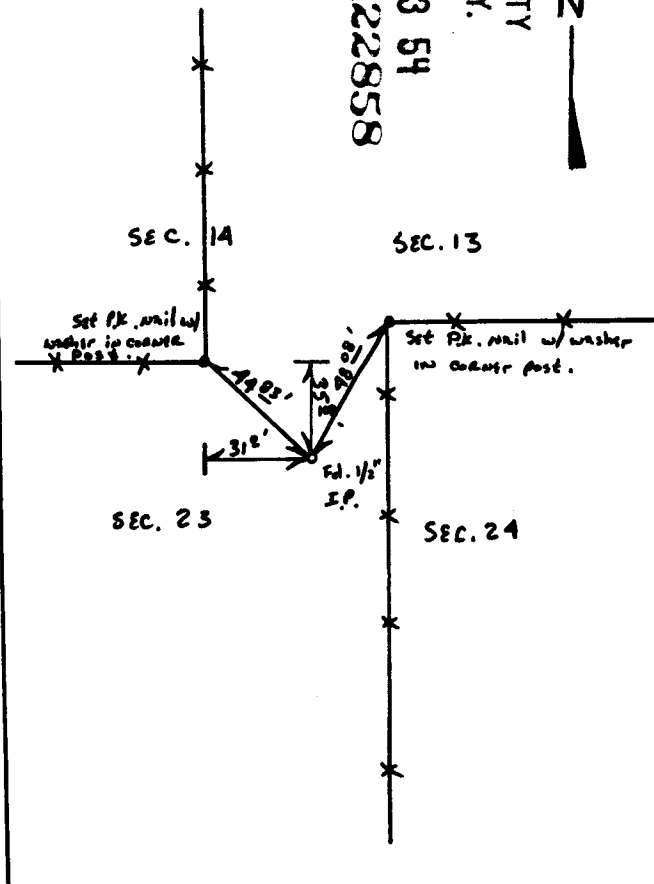
GLO RECORD: 18" x 11" x 6" Sand stone.

MONUMENT SET: None.

REFERENCE POINTS SET: Set P.K. nails w/ washers stamped PLS 5910 in corner posts.  
(See sketch)

### Monument Inscription

#### LOCATION SKETCH



RECEIVED  
 LARAMIE COUNTY  
 CHEYENNE, WY.  
 JUL 12 PM 3 54  
 122858

State of Wyoming  
 Office of County Clerk  
 County of \_\_\_\_\_

This Certified Land Corner Recordation Certificate was filed for record on the \_\_\_\_\_ day of \_\_\_\_\_, 19 \_\_\_\_, in Book No. T 15, R 62, on Alpha-Numeric coordinates N-21 and was noted on the Cross Index Plat.

\_\_\_\_\_  
 County Clerk

Corner Type:  Aliquot Corner  Other      Section(s) 13, 14, 23, 24      Meridian 6th P.M.  
 Corner Name Set flow corner      Township T. 15 N.      Range R. 62 W.      Page \_\_\_\_\_  
 Sheet 1 of 1

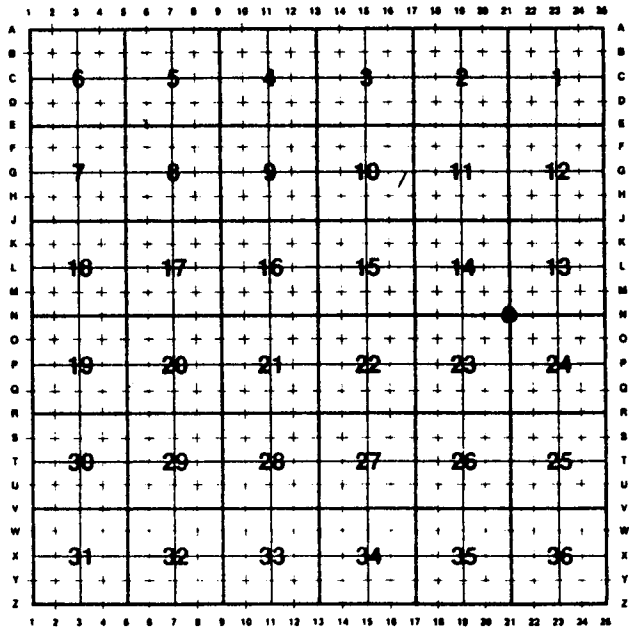
000854

**Directions for using the  
Cross Index Plat**

Section, quarter and sixteenth corners will be marked with a dot at the corner location. The alpha-numeric coordinate number is then determined for the intersection of the two lines. A corner that applies to two or more townships shall be filed under all that apply by the use of photo copies.

Closing corners will be indexed under the township in which they control ownership. For 1/64, 1/256, 1/1024 and non-aliquot corners lying between grid designations, mark the appropriate grid area with a dot and use the index code to the north and west (local systems may be used if the method is approved by the County Surveyor or Clerk and a written description of its use is filed in the front of each book of certificates).

**Cross Index Plat**



**State Plane Coordinates (optional)**

Zone W WC EC E feet/meters

NAD 1927       NGVD 1929       NAD 1983       NAVD 1988

North (Y) = \_\_\_\_\_ East (X) = \_\_\_\_\_ EL = \_\_\_\_\_

Latitude \_\_\_\_\_ Longitude \_\_\_\_\_

Scale Factor \_\_\_\_\_ Geoid Height \_\_\_\_\_

**Certification**

I, Jeffrey B. Jones, Wyoming PLS-PE 5910 certify that I, or others under my supervision, have performed the work as described above and completed this form.

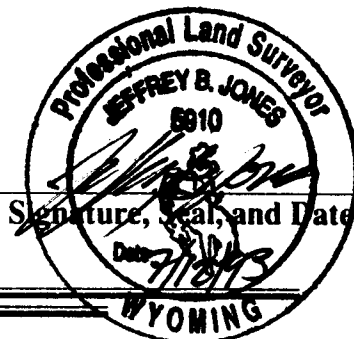
Company or Agency INTERMOUNTAIN PROFESSIONAL SERVICES, INC.

Mailing Address 1816 CENTRAL AVENUE

Street Address \_\_\_\_\_

City, State, ZIP CHEYENNE, WYOMING 82001

Telephone, FAX PH. 307-632-3138 FAX 307-632-3194



Sheet \_\_\_\_\_ of \_\_\_\_\_