

State of Wyoming Corner Record

(In compliance with the *CORNER PERPETUATION AND FILING ACT*, Wyoming Statutes, 1997, Section 33-29-140, et. seq., and the Rules and Regulations of the Board of Registration for Professional Engineers and Professional Land Surveyors)

Reverse side of this form may be used if more space is needed.

Record of original survey and citation of source of historical information (if corner is lost or obliterated). Description of corner monumentation evidence found and/or monument and accessories established to perpetuate the location of this corner. Sketch of relative location of monument, accessories, and reference points with course and distance to adjacent corner(s) (if determined in this survey). Method and rationale for reestablishment of lost or obliterated corner.

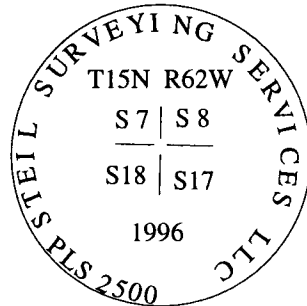
G.L.O. Record: J. Wesley Hammond, U.S. Deputy Surveyor, July 13, 1872.
80.00 Chains Set sand stone 20 x 10 x 4 for the corner to sections 7, 8, 17 & 18.

Subsequent Record: Laramie County Road Records, County Field Book No. 7, circa October 1, 1909, indicates the road was surveyed and notes "Set two stones etc. ... good road.... cor. good Loose position good"

Found: 3 1/4" diameter aluminum cap marked as noted below, set flush to the asphalt surface.

See back of this sheet for measurements to other found and or set and accepted corners in the area.

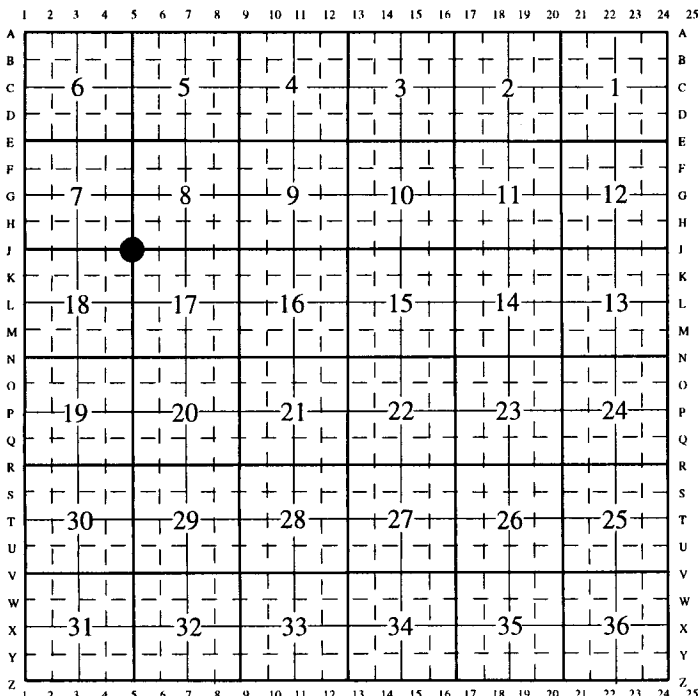
Aluminum Cap Markings



Date of Field Work: June 22, 2002

Office Reference: Burns North 26109

CROSS INDEX DIAGRAM

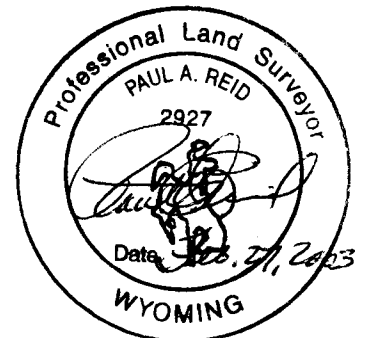


Firm/Agency, Address

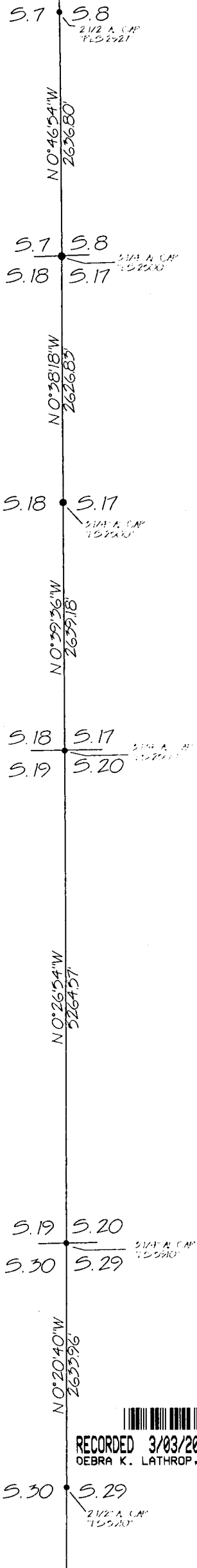
Paul A. Reid, PLS
1533 Pinion Drive
Cheyenne WY
Phone (307) 637-3400

This corner record was prepared by me or under my direction and supervision.

SEAL & SIGNATURE



Corner Name: Northwest Corner Section: 17 T.15 N., R. 62 W., 6th P.M., Cross-Index No.: J-5
SBRPEPLS/PLSW: MARCH 1994/97



Bearings are grid and based upon the Wyoming East Zone NAD 83. Geodetic bearings can be derived by applying $-0^{\circ} 52' 21''$ to the bearing.

T.15N. R.62W., 6th P.M.

