

State of Wyoming Corner Record

(In compliance with the *CORNER PERPETUATION AND FILING ACT*, Wyoming Statutes, 1997, Section 33-29-140, et. seq., and the Rules and Regulations of the Board of Registration for Professional Engineers and Professional Land Surveyors)

Reverse side of this form may be used if more space is needed.

Record of original survey and citation of source of historical information (if corner is lost or obliterated). Description of corner monumentation evidence found and/or monument and accessories established to perpetuate the location of this corner. Sketch of relative location of monument, accessories, and reference points with course and distance to adjacent corner(s) (if determined in this survey). Method and rationale for reestablishment of lost or obliterated corner.

G.L.O. Record: J. Wesley Hammond, U.S. Deputy Surveyor, July 15, 1872.
40.00 Chains Set sand stone 20 x 10 x 3 for 1/4 sec. cor.

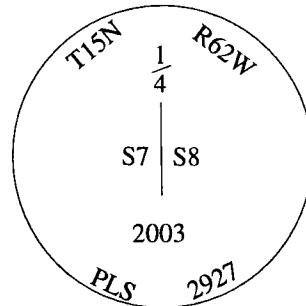
Subsequent Record: Laramie County Road Records, County Field Book No. 7, circa October 1, 1909, indicates the road was surveyed and indicating "Set two stones corner in place"

Found: Intersection of center line of County Road No. 149 and latitudinally with a long time fence line east, found harmoniously related to other found and accepted corners north and south and the original record. This position is accepted as a faithful perpetuation the original survey.

Set: No. 5 x 24" rebar with 2 1/2" diameter aluminum cap marked as noted below, flush to the asphalt surface of County Road No. 149.

See back of this sheet for measurements to other found and or set and accepted corners in the area.

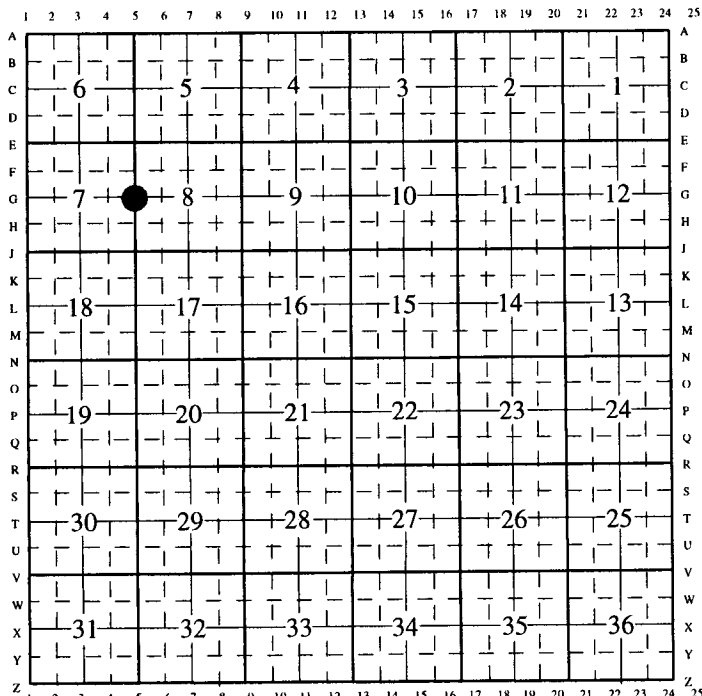
Aluminum Cap Markings



Date of Field Work: June 22, 2002

Office Reference: Burns North 26109

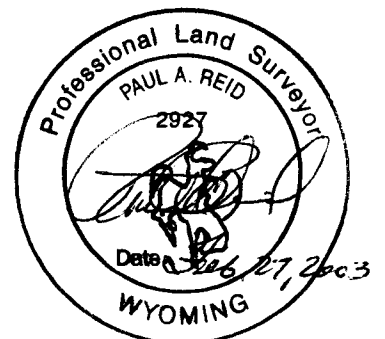
CROSS INDEX DIAGRAM



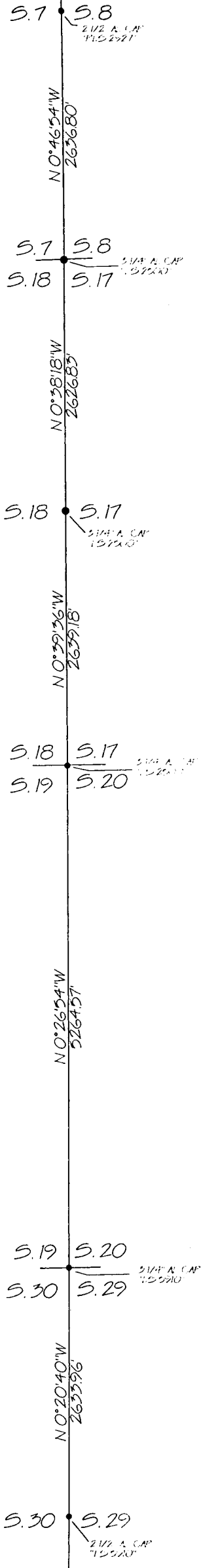
Firm/Agency, Address

Paul A. Reid, PLS
1533 Pinion Drive
Cheyenne WY
Phone (307) 637-3400

This corner record was prepared by me or under my direction and supervision.
SEAL & SIGNATURE



Corner Name: West 1/4 Corner Section: 8 T.15 N., R. 62 W., 6th P.M., Cross-Index No.: G-5
SBRPEPLS/PLSW: MARCH 1994/97



Bearings are grid and based upon the Wyoming East Zone NAD 83. Geodetic bearings can be derived by applying $-0^{\circ}32'21''$ to the bearing.

T.15N. R.62W., 6th P.M.