

# State of Wyoming Corner Record

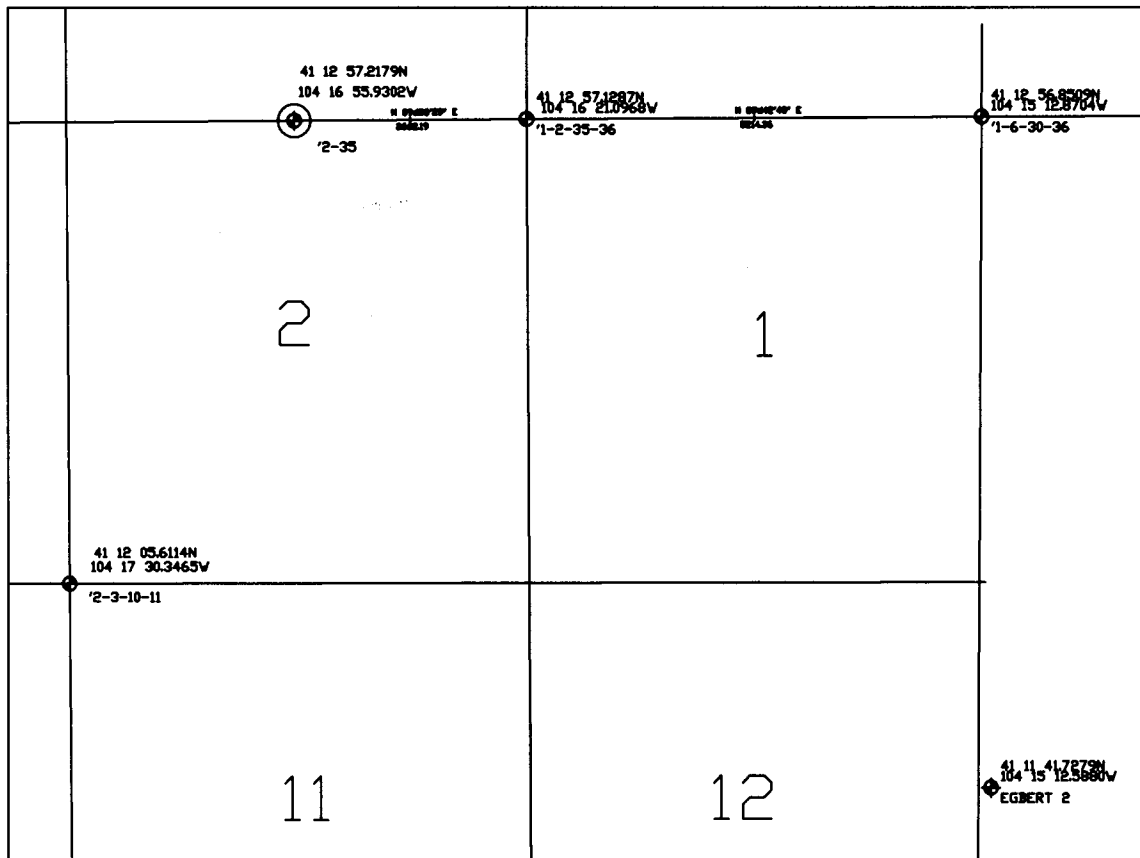
(In compliance with the **CORNER PERPETUATION AND FILING ACT**, Wyoming Statutes, 1997 Section 33-29-140 et. seq., and the Rules and Regulations of the Board of Professional Engineers and Professional Land Surveyors)

Reverse side of this form may be used if more space is needed.

Record of original survey and citation of source of historical information (if corner is lost or obliterated). Description of corner monumentation evidence found and/or monument and accessories established to perpetuate the location of this corner. Sketch of relative location of monument, accessories, and reference points with course and distance to adjacent corner(s) (if determined in this survey). Method and rationale for re-establishment of lost or obliterated corner.

Found: Badly erroded 16" x 7" x 6" sandstone lying on the ground under an east-west fence at a position consistant with G.L.O. calls.

Set: Nothing



LATITUDE AND LONGITUDE = NAD 1983

DISTANCES = WGS84 ELLIPSOID

NOTE: COORDINATES DERIVED USING MULTIPLE NGS OBSERVATIONS THROUGH THE ONLINE POSITIONING USER SERVICE AND A SURVEY GRADE GPS RECEIVER.

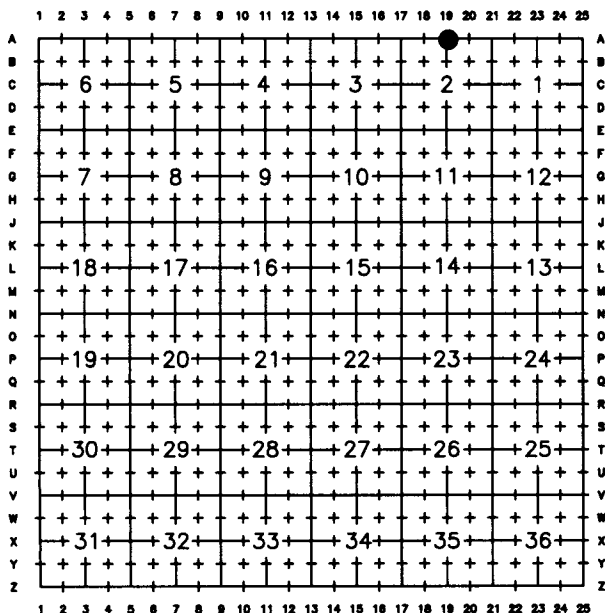


INDICATES MONUMENT THIS RECORD

Date of Field Work: 07-24-2004

Office Reference: 11066 DELTA Gross 2-2  
T14-15NR62W-A19 1010

## Cross Index Plat



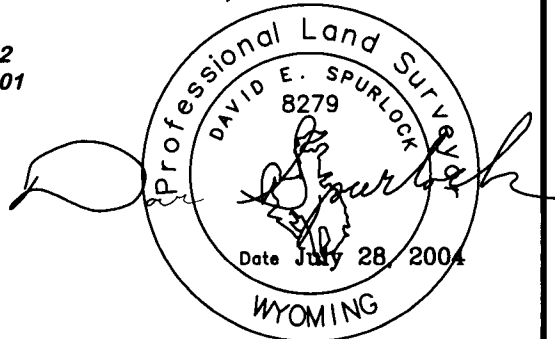
Firm/Agency, Address

this corner record provided by:  
**SPURLOCK LAND SURVEYING**  
Dave Spurlock - Surveyor  
UNDER CONTRACT TO:



**RIFFIN & ASSOCIATES, INC.**

1414 ELK ST., SUITE 202  
ROCK SPRINGS, WY 82901  
(307) 362-5028



RECORDED 8/23/2004 AT 12:32 PM REC# 395984 BK# 1832 PG# 1452  
DEBRA K. LATHROP, CLERK OF LARAMIE COUNTY, WY PAGE 1 OF 1

County: LARAMIE, Wyoming

Corner Name: SOUTH 1/4, Section: 35, T15N, R 62W, 6th P.M., Cross-Index No.: A19

