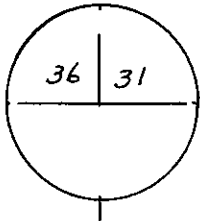


**CERTIFIED LAND CORNER RECORDATION**

R-63-W. | R-62-W

DESCRIPTION OF CORNER EVIDENCE FOUND, AND ORIGINAL RECORD (If known)



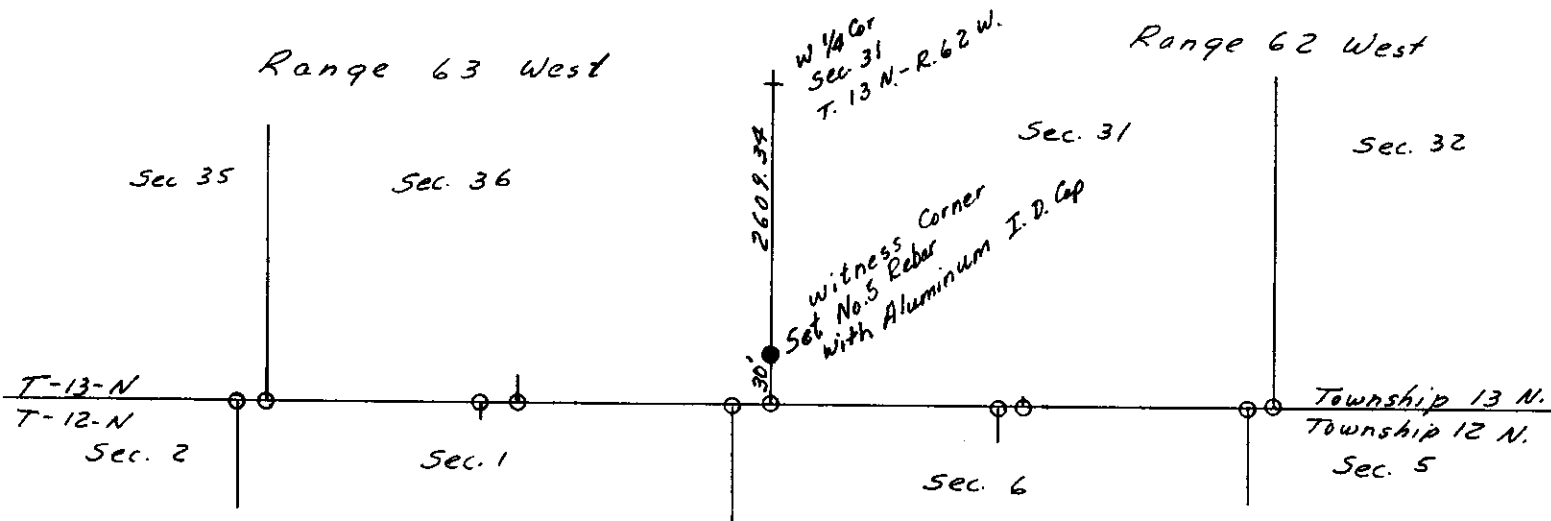
T  
13  
N  
T  
12  
N

No evidence of B.L.M. Brass Cap.  
Established S.W. Cor. Sec. 31 by reference to  
Plat of Carpenter Cemetery.

DESCRIPTION OF MONUMENT AND ACCESSORIES ESTABLISHED  
TO PERPETUATE THE ORIGINAL LOCATION OF THIS CORNER:

SKETCH, WITH COURSE AND DISTANCE TO ADJACENT CORNER IF DETERMINED IN THIS SURVEY.  
(May Sketch or Paste Reproduction on Reverse Side.)

Indicates locations where, in 1911, B.L.M. Set Brass Caps. No evidence of those Monuments could be found at the time of this Survey.



I, Edward C. Fry certify that I have carefully performed or reviewed the work done on the diagrammed corner as reported on this recordation form and approve the same.

Edward C. Fry P.E./L.S. 662  
Signature of Surveyor Registration No.

STATE OF WYOMING,  
Office of Clerk and Recorder,  
County of Laramie

# 704273

This "corner record" was filed for record on the JUN 27 1983 day of 1983, 1983, was noted on the cross-index plat and is assigned page No.         , in book No.         .

Just C Whitehead JB  
County Official

Cross Index No. \_\_\_\_\_ T. \_\_\_\_\_ R. \_\_\_\_\_ Mer. \_\_\_\_\_  
 \_\_\_\_\_ T. \_\_\_\_\_ R. \_\_\_\_\_ Mer. \_\_\_\_\_  
 \_\_\_\_\_ T. \_\_\_\_\_ R. \_\_\_\_\_ Mer. \_\_\_\_\_  
 \_\_\_\_\_ T. \_\_\_\_\_ R. \_\_\_\_\_ Mer. \_\_\_\_\_  
 \_\_\_\_\_ T. \_\_\_\_\_ R. \_\_\_\_\_ Mer. \_\_\_\_\_  
 \_\_\_\_\_ T. \_\_\_\_\_ R. \_\_\_\_\_ Mer. \_\_\_\_\_  
 \_\_\_\_\_ T. \_\_\_\_\_ R. \_\_\_\_\_ Mer. \_\_\_\_\_

704273

Ms 84  
3234 Acacia  
Chey wv 82001