

State of Wyoming Corner Record

(in compliance with the CORNER PERPETUATION AND FILING ACT, Wyoming Statutes, 1977, Section 36-11-101, et. seq., and the Rules and Regulations of the Board of Registration for Professional Engineers and Professional Land Surveyors)

Reverse side of this form may be used if more space is needed.

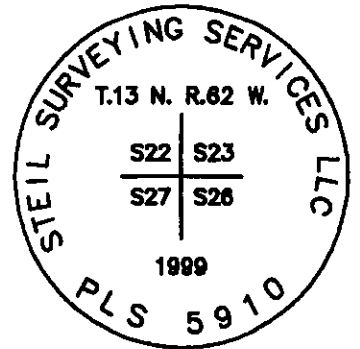
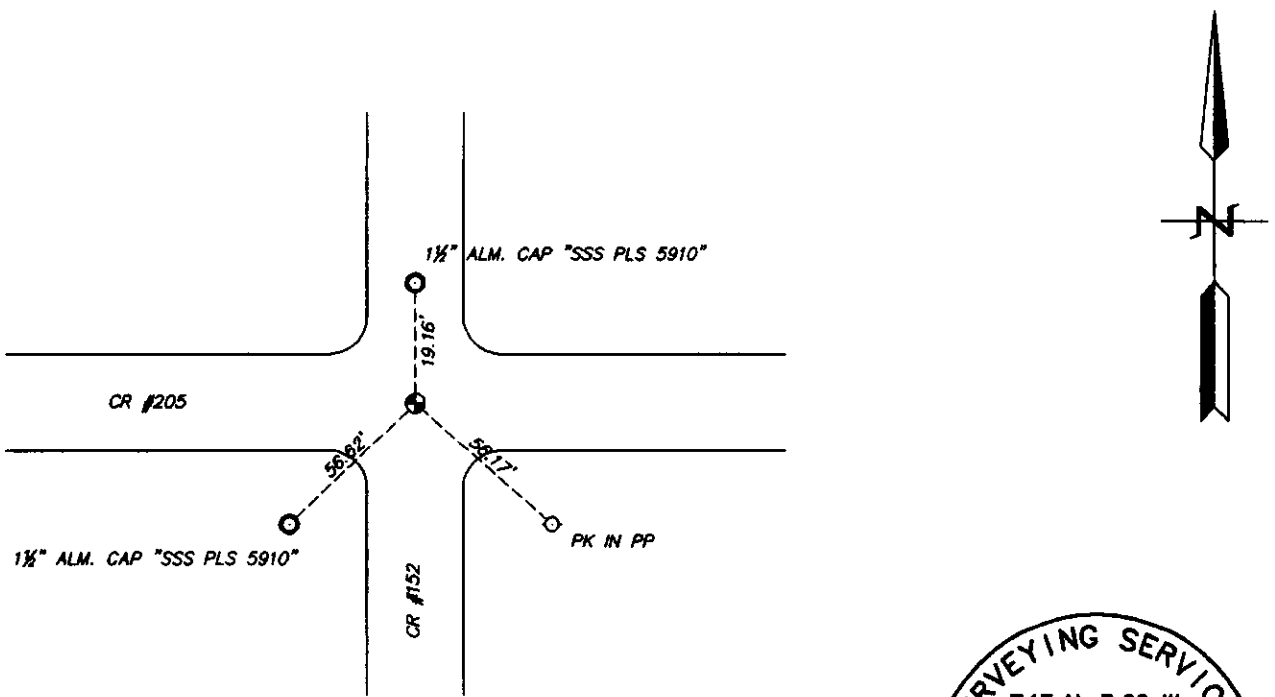
Record of original survey and citation of source of historical information (if corner is lost or obliterated). Description of corner monumentation evidence found and/or monument and accessories established to perpetuate the location of this corner. Sketch of relative location of monument, accessories, and reference points with course and distance to adjacent corner(s) (if determined in this survey). Method and rationale for reestablishment of lost or obliterated corner.

RECORD:

MONUMENT FOUND: NOTHING. ACCEPTED CENTERLINE OF COUNTY ROADS AS BEST EVIDENCE.

MONUMENT SET: #5 X 24" REBAR WITH 3/4" ALUMINUM CAP STAMPED AS SHOWN.

REFERENCES: REFERENCES AS SHOWN.



Date of Field Work: 5-5-99 Office Reference: 99120

CROSS INDEX DIAGRAM

A	1	2	3	4	5	6	7	8	9	10	11	12	13	14	15	16	17	18	19	20	21	22	23	24	25	B	
B																											C
C	6					5																					D
D																											E
E																											F
F																											G
G	7					8																					H
H																											I
I																											J
J																											K
K																											L
L	18					17																					M
M																											N
N																											O
O																											P
P	19					20																					Q
Q																											R
R																											S
S																											T
T	30					29																					U
U																											V
V																											W
W																											X
X	31					32																					Y
Y																											Z
Z	1	2	3	4	5	6	7	8	9	10	11	12	13	14	15	16	17	18	19	20	21	22	23	24	25		

Firm/Agency, Address

STEIL SURVEYING SERVICES, LLC.

1102 WEST 19th STREET

CHEYENNE WY 82001

Telephone Number: **(307) 634-7273**

This corner record was prepared by me or under my direction and supervision.

SEAL & SIGNATURE



RECORDED 4/05/2001 AT 8:50 AM REC# 292237 X# 1585 PG# 68
DEBRA K. LATHROP, CLERK OF LARAMIE COUNTY, WY PAGE 1 OF 1