

State of Wyoming Corner Record

(In compliance with the *CORNER PERPETUATION AND FILING ACT*, Wyoming Statutes, 1997 Section 33-29-140 et. seq., and the Rules and Regulations of the Board of Professional Engineers and Professional Land Surveyors)

Reverse side of this form may be used if more space is needed.

Record of original survey and citation of source of historical information (if corner is lost or obliterated). Description of corner monumentation evidence found and/or monument and accessories established to perpetuate the location of this corner. Sketch of relative location of monument, accessories, and reference points with course and distance to adjacent corner(s) (if determined in this survey). Method and rationale for reestablishment of lost or obliterated corner.

GLO RECORD: A SANDSTONE 22X10X7, MARKED 3 NOTCHES ON BOTH THE SOUTH AND EAST SIDES

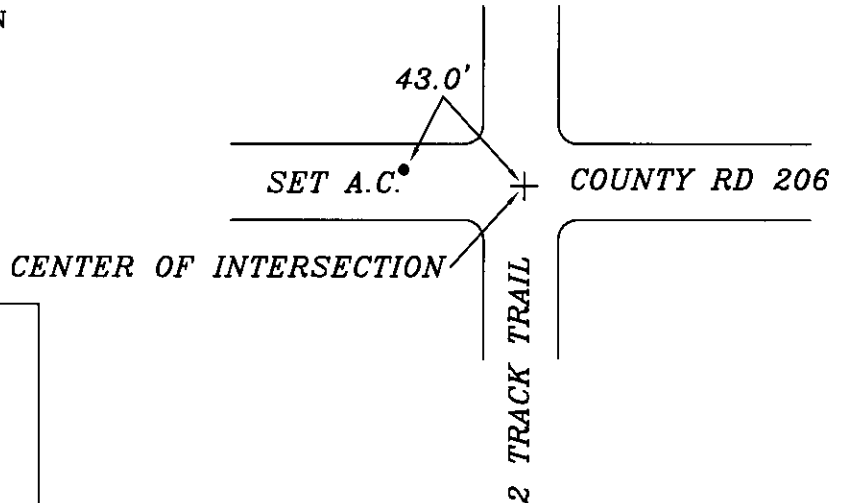
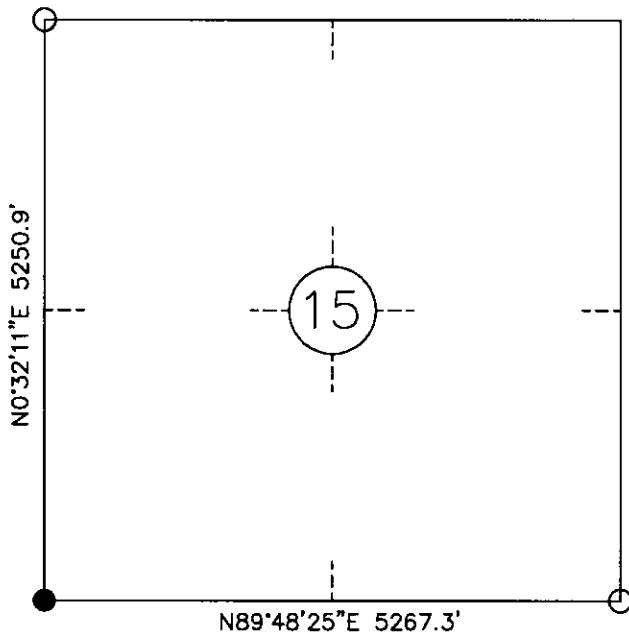
FOUND: NOTHING

SET: 5/8" X 24" REBAR W/ 2" ALUMINUM CAP MARKED AS SHOWN

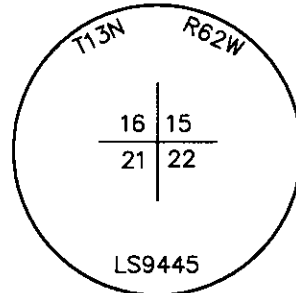
Monument Sketch

RE-ESTABLISHED BASED ON DOUBLE PROPORTION
SE 15, SW 17, NW 15, SW 22

Monument location



Monument Inscription



Date of Field Work: 11.16.2011

Cross Index Plat

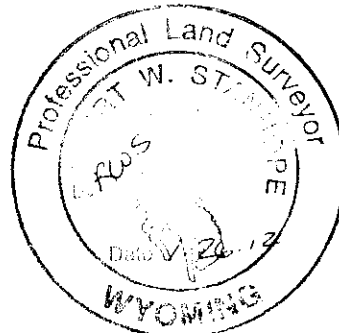
	1	2	3	4	5	6	7	8	9	10	11	12	13	14	15	16	17	18	19	20	21	22	23	24	25		
A																											B
B																											C
C			6		5		4		3		2		1														D
D																											E
E																											F
F																											G
G						7		8		9		10		11		12											H
H																											J
J																											K
K																											L
L						18		17		16		15		14		13											M
M																											N
N																											O
O																											P
P						19		20		21		22		23		24											Q
Q																											R
R																											S
S																											T
T						30		29		28		27		26		25											U
U																											V
V																											W
W																											X
X						31		32		33		34		35		36											Y
Y																											Z
	1	2	3	4	5	6	7	8	9	10	11	12	13	14	15	16	17	18	19	20	21	22	23	24	25		

Firm/Agency, Address

ROBERT W. STANHOPE
W.B.I. PIPELINE
2010 MONTANA AVE.
GLENDAVE, MT 59330
Telephone Number: (406) 359.7200

This corner record was prepared by me or under my direction and supervision.

SEAL & SIGNATURE



RECORDED 2/03/2012 AT 10:56 AM REC# 584501 BK# 2258 PG# 842
DEBRA K. LATHROP, CLERK OF LARAMIE COUNTY, WY PAGE 1 OF 1

Corner Name Southwest Corner Section 15, T 13 N, R 62 W, 6th P.M.

Cross-Index No.: N-13

County: LARAMIE Wyoming

SBRPEPLS/PLSW: March 1994; PLSW January 1998