

# State of Wyoming Corner Record

(In compliance with the **CORNER PERPETUATION AND FILING ACT**, Wyoming Statutes, 1997 Section 33-29-140 et. seq., and the Rules and Regulations of the Board of Professional Engineers and Professional Land Surveyors)

Reverse side of this form may be used if more space is needed.

Record of original survey and citation of source of historical information (if corner is lost or obliterated). Description of corner monumentation evidence found and/or monument and accessories established to perpetuate the location of this corner. Sketch of relative location of monument, accessories, and reference points with course and distance to adjacent corner(s) (if determined in this survey). Method and rationale for reestablishment of lost or obliterated corner.

**GLO RECORD:** A SANDSTONE 20X12X7, MARKED WITH 4 NOTCHES ON THE SOUTH SIDE AND 4 NOTCHES ON THE EAST SIDE.

**FOUND:** NO EVIDENCE FOUND

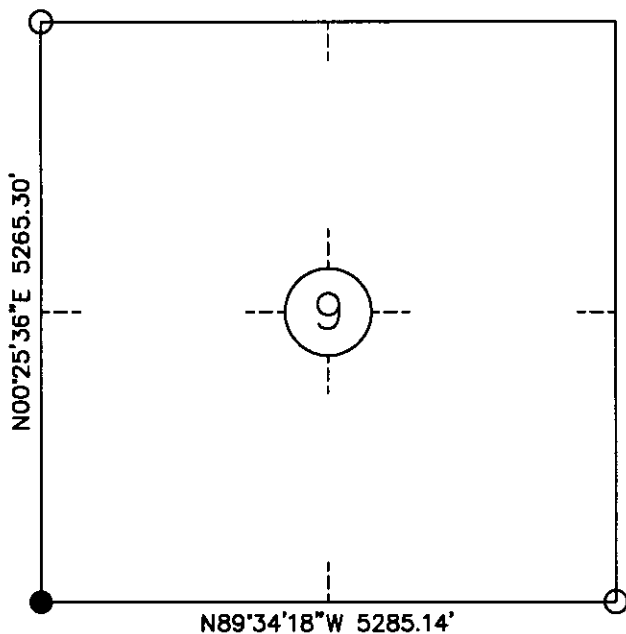
**SET:** 5/8" X 24" REBAR W/ 2" ALUMINUM SURVEY CAP MARKED AS SHOWN

## Monument Sketch

ESTABLISHED BASED ON LINE OF OCCUPATION:  
NORTH/SOUTH APPROACHES  
EAST/WEST COUNTY ROAD 207

NO TIES AVAILABLE

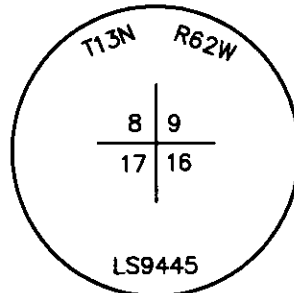
### Monument location



COUNTY RD 207 SET A.C.

APPROACH

### Monument Inscription



RECORDED 9/08/2011 AT 1:14 PM REC# 575308 BK# 2234 PG# 1136  
DEBRA K. LATHROP, CLERK OF LARAMIE COUNTY, WY PAGE 1 OF 1

Date of Field Work: 6.23.2011

### Cross Index Plat

	1	2	3	4	5	6	7	8	9	10	11	12	13	14	15	16	17	18	19	20	21	22	23	24	25		
A																											A
B																											B
C						6																					C
D																											D
E																											E
F																											F
G																											G
H																											H
J																											J
K																											K
L																											L
M																											M
N																											N
O																											O
P																											P
Q																											Q
R																											R
S																											S
T																											T
U																											U
V																											V
W																											W
X																											X
Y																											Y
Z																											Z
	1	2	3	4	5	6	7	8	9	10	11	12	13	14	15	16	17	18	19	20	21	22	23	24	25		

Firm/Agency, Address

ROBERT W. STANHOPE  
W.B.I. PIPELINE  
2010 MONTANA AVE.  
GLENDAVE, MT 59330

Telephone Number: (406) 359.7200

This corner record was prepared by me or under my direction and supervision.

SEAL & SIGNATURE



*Robert W. Stanhope*

Corner Name Southwest Corner Section 9, T 13 N, R 62 W, 6th P.M.

County: LARAMIE Wyoming

Cross-Index No.: J-9

SBRPEPLS/PLSW: March 1994; PLSW January 1998