

CERTIFIED LAND CORNER RECORDATION

DESCRIPTION OF CORNER EVIDENCE FOUND, AND ORIGINAL RECORD (if known)

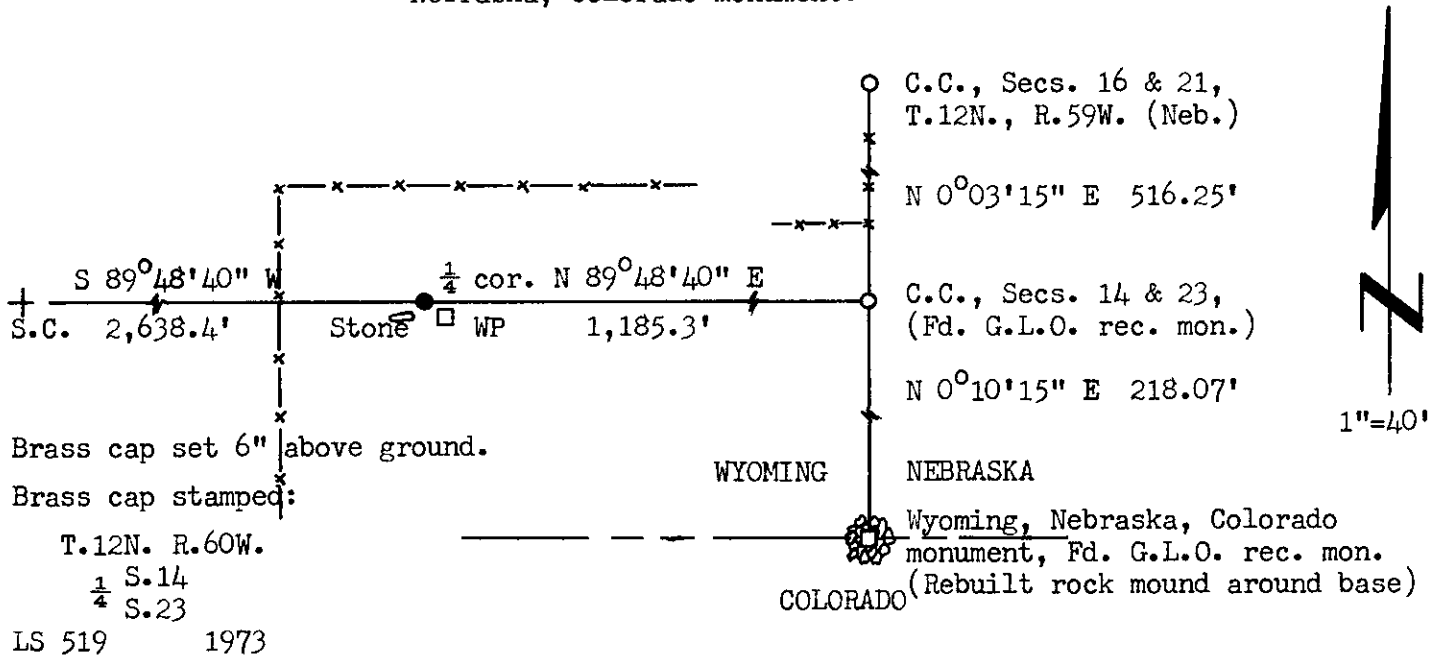
LOCATION Found 3" x 10" x 12" sandstone (floating).
 1/4 S.14 Corner re-established by single proportion.
 1/4 S.23 G.L.O. record - Sand Stone 16 x 12 x 4 marked 1/4 on N. side for 1/4 sec cor.
 T.12N., R.60W. (1874)
 6th P.M.

DESCRIPTION OF MONUMENT AND ACCESSORIES ESTABLISHED TO PERPETUATE THE ORIGINAL LOCATION OF THIS CORNER:

At the corner: Set a 1 1/2" dia. x 30" long iron pipe with brass cap.
 Accessories: 4" x 4" x 4' Redwood Witness Post set 2' SE of corner monument.
 Left stone as memorial.

SKETCH, WITH COURSE AND DISTANCE TO ADJACENT CORNER IF DETERMINED IN THIS SURVEY.
 (May Sketch or Paste Reproduction on Reverse Side.)

Note: Basis of Bearing - By solar observation at the Wyoming, Nebraska, Colorado monument.



Brass cap set 6" above ground.
 Brass cap stamped:
 T.12N. R.60W.
 1/4 S.14
 1/4 S.23
 LS 519 1973

I, R.L. Hudson certify that I have carefully performed ~~or reviewed~~ the work done on the diagrammed corner as reported on this recordation form and approve the same.

R.L. Hudson Wyoming L.S. No. 519
 Signature of Surveyor Registration No.

STATE OF WYOMING,
 Office of Clerk and Recorder,
 County of Laramie

This "corner record" was filed for record on the 22nd day of March, 1973, was noted on the cross-index plat and is assigned page No. 12-60, in book No. ONE

Johy B. Hillman
 County Official

Cross Index No.	T. _____	R. _____	Mer. _____
	T. _____	R. _____	Mer. _____
	T. _____	R. _____	Mer. _____
	T. _____	R. _____	Mer. _____
	T. _____	R. _____	Mer. _____
	T. _____	R. _____	Mer. _____
	T. _____	R. _____	Mer. _____

Photographed _____

Indexed _____

Filed _____

THE STATE OF MONTANA }
COUNTY OF LIBERTY } ss.

This instrument was filed for record
at _____ P.M. on the

_____ day of _____

_____ 19__ and has been recorded in

Book _____ page _____

[Signature]

Deputy