

CERTIFIED LAND CORNER RECORDATION

DESCRIPTION OF CORNER EVIDENCE FOUND, AND ORIGINAL RECORD (If known)

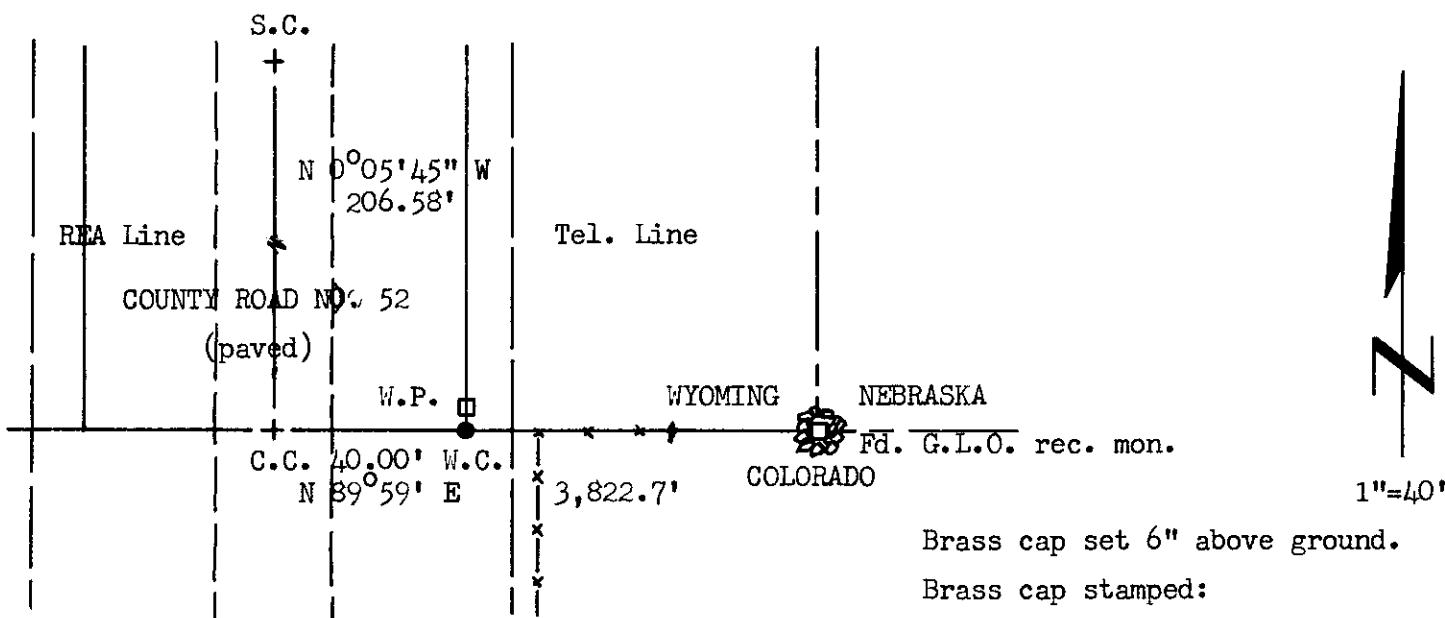
LOCATION
S.22 S.23
C.C.
T.12N.,R.60W.
6th P.M.

Corner re-established by (solar) bearing and G.L.O. distance from the Wyoming, Nebraska, Colorado monument.
G.L.O. record - Retracement survey by Edwin H. Van Antwerp in 1911.
S 89°59' W, 57.92 chains (sandstone 12 x 12 x 2 ins.)

DESCRIPTION OF MONUMENT AND ACCESSORIES ESTABLISHED TO PERPETUATE THE ORIGINAL LOCATION OF THIS CORNER:

At the corner: No monument set.
Accessories: Set a 1½" dia. x 30" long iron pipe with brass cap, as Witness Corner, from which the C.C. bears S 89°59' W, 40.00 feet distant.
4" x 4" x 4" Redwood Post with aluminum sign set 1.5' N of W.C., scribed Wyoming on N and Colorado on S face.

SKETCH, WITH COURSE AND DISTANCE TO ADJACENT CORNER IF DETERMINED IN THIS SURVEY.
(May Sketch or Paste Reproduction on Reverse Side.)



Brass cap set 6" above ground.
Brass cap stamped:

WYOMING
T.12N. W.C. R.60W.
S.22 S.23
WYO LS 519
1973
COLORADO

I, R.L. Hudson certify that I have carefully performed or reviewed the work done on the diagrammed corner as reported on this recordation form and approve the same.

R.L. Hudson Wyoming L.S. No. 519
Signature of Surveyor Registration No.

STATE OF WYOMING,
Office of Clerk and Recorder,
County of WYOMING

This "corner record" was filed for record on the 22nd day of March, 1973, was noted on the cross-index plat and is assigned page No. 12-60, in book No. ONE.


John B. Hillman
County Official

Cross Index No. _____	T. _____	R. _____	Mer. _____
_____	T. _____	R. _____	Mer. _____
_____	T. _____	R. _____	Mer. _____
_____	T. _____	R. _____	Mer. _____
_____	T. _____	R. _____	Mer. _____
_____	T. _____	R. _____	Mer. _____
_____	T. _____	R. _____	Mer. _____

Photographed _____
Indexed _____
Noted _____

The State of Wyoming }
County of Laramie } SS

This instrument was filed for record
at 4:22 o'clock P. M. on the
22nd day of March
A. D. 1923 and did recorded in
Book _____ on page _____



County Clerk & Ex-Officio Register of Deeds
By _____ Deputy