

# State of Wyoming Corner Record

(In compliance with the CORNER PERPETUATION AND FILING ACT, Wyoming Statutes, 2013 Section 33-29-901 through 33-29-910, and the Rules and Regulations of the Board of Professional Engineers and Professional Land Surveyors)

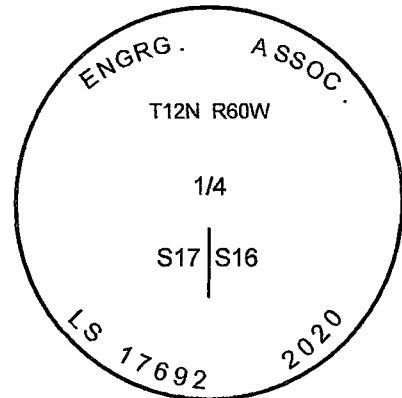
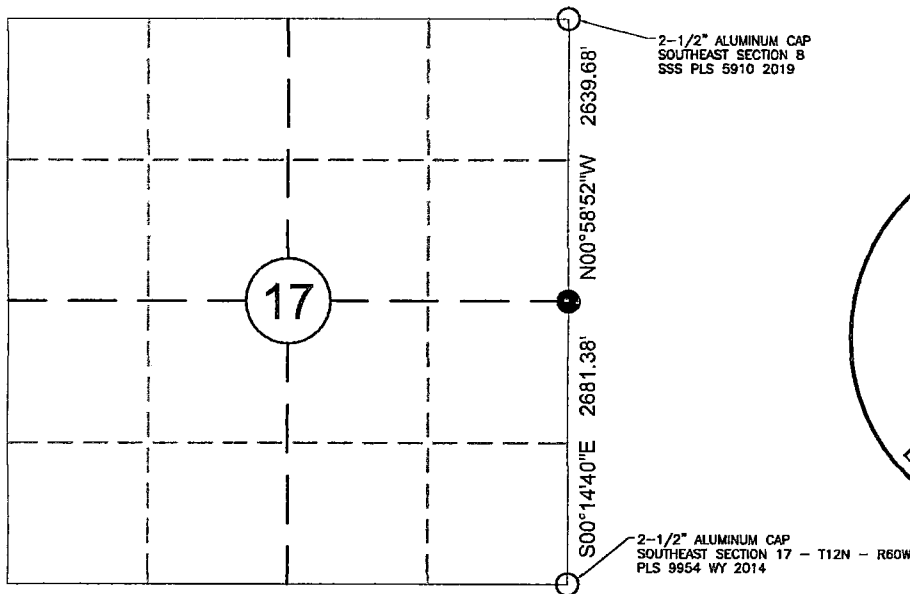
Reverse side of this form may be used if more space is needed.

**Record:** Corner was originally monumented with a sandstone 17x11x6 set 13 in. deep, marked 1/4 on west side for 1/4 section corner at 40.00 chains in field notes from the original G.L.O. subdivisions survey Vol. 45 July 25th - 30th, 1874.

**Found:** No evidence of original corner or accessories were found. Found 5/8" rebar east of existing N-S fence line. Found existing fence extending West from this position. Corner Record recorded at Reception # 491260, BK# 2040, PG# 1185 in the Laramie County Clerk's office states "An aluminum survey cap, marked appropriately straight line and equidistant between the Southwest Corner and Northwest Corner of Section 16. T12N R60W 1/4 S 17 S 16 7-2005 LS 9063". No aluminum cap found. The found 5/8" rebar position agrees with this position. Existing fence on a N-S line 1.3 feet West of this 5/8" rebar and an existing fence extending West, in line, with 5/8" rebar to the 1/4 corner common to Section 18 and 17. Existing fence was constructed after LS 9063 monuments were set for a Record of Survey dated July 3, 2005 as Exhibit for sale of property, Reception # 491260, BK#2040, PG# 1186 recorded in the Laramie County Clerk's Office.

**Reestablishment:** The existing fences and 5/8" rebar is accepted as the best available evidence as to the position of this corner. No other evidence found.

**Set:** A 2.5" aluminum cap marked as shown on the existing 5/8" rebar for the 1/4 corner common to Section 16/17.



## Monument Inscription

See page 2 for sketch of additional details.

Date of Field Work: 12/31/2020

Job Number: 20100.32

County: LARAMIE

### Cross Index Plat

	1	2	3	4	5	6	7	8	9	10	11	12	13	14	15	16	17	18	19	20	21	22	23	24	25
A																									
B																									
C		6					5										4								
D																									
E																									
F																									
G																									
H																									
J																									
K																									
L																									
M																									
N																									
O																									
P																									
Q																									
R																									
S																									
T																									
U																									
V																									
W																									
X																									
Y																									
Z																									
	1	2	3	4	5	6	7	8	9	10	11	12	13	14	15	16	17	18	19	20	21	22	23	24	25

Firm/Agency, Address

Engineering Associates  
605 Plaza Court  
Laramie, Wyoming 82070  
Telephone: (307) 742-9220  
Fax: (307) 742-0316  
engassoc@eaengineers.com

This corner record was prepared by me or under my direction and supervision.

**SEAL & SIGNATURE**

County Clerk's Office Use Only



Corner Name 1/4 Section 16/17, T12N, R60W, 6 P.M.

Cross-Index No.: L-9

RECORDED 1/15/2021 AT 9:10 AM BK# 2715 PG# 5  
 Debra K. Lee, CLERK OF LARAMIE COUNTY, WY PAGE 1 OF 2  
 REC# #: 799668