

CERTIFIED LAND CORNER RECORDATION

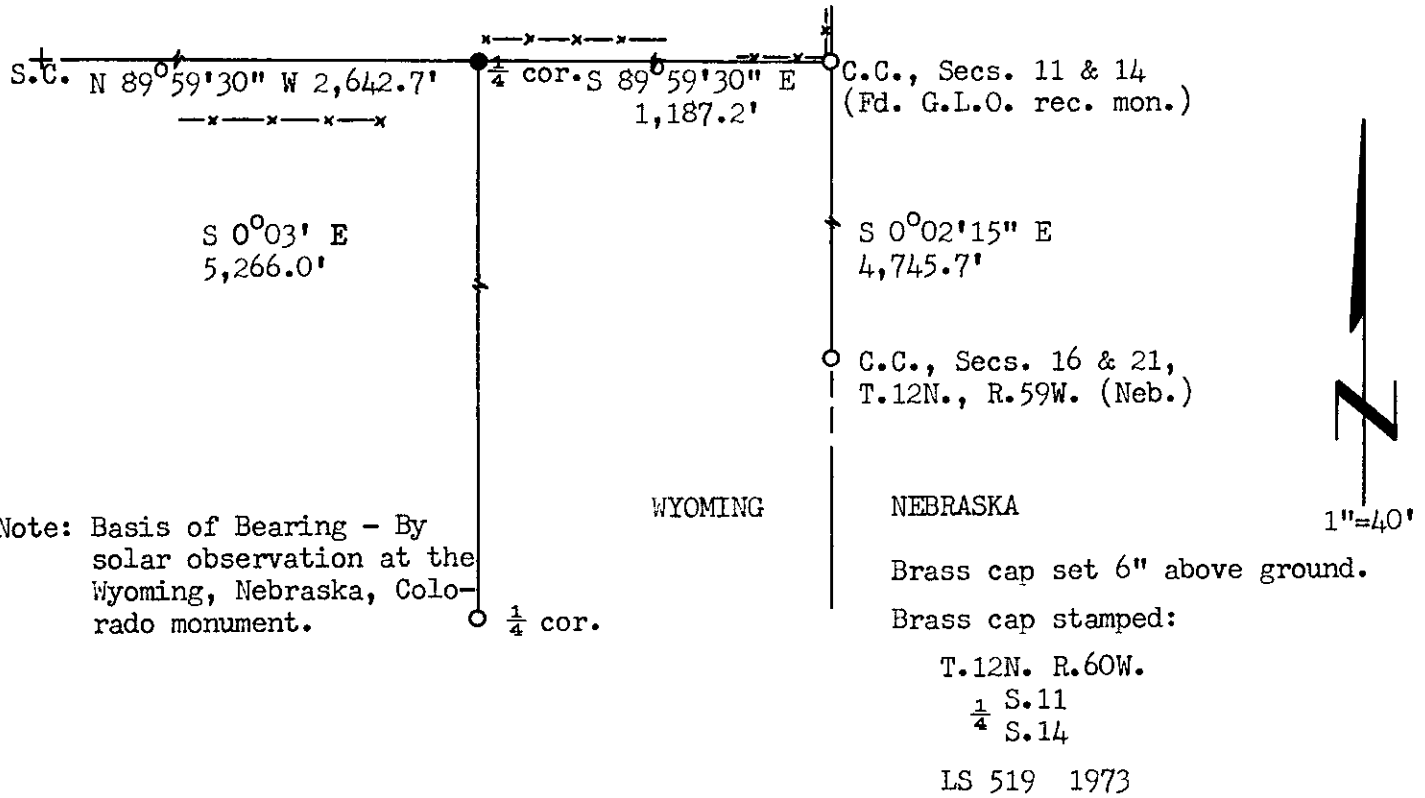
DESCRIPTION OF CORNER EVIDENCE FOUND, AND ORIGINAL RECORD (if known)

LOCATION Corner re-established by single proportion.
 $\frac{1}{4}$ S.11 G.L.O. record - Sand Stone 18 x 11 x 3, 12 in deep marked with $\frac{1}{4}$ on
 $\frac{1}{4}$ S.14 N side for $\frac{1}{4}$ Sec cor.
 T.12N., R.60W. (1874)
 6th P.M.

DESCRIPTION OF MONUMENT AND ACCESSORIES ESTABLISHED TO PERPETUATE THE ORIGINAL LOCATION OF THIS CORNER:

At the corner: Set a $1\frac{1}{2}$ " dia. x 30" long iron pipe with brass cap.
 Accessories: Raised rock mound around corner monument.

SKETCH, WITH COURSE AND DISTANCE TO ADJACENT CORNER IF DETERMINED IN THIS SURVEY.
 (May Sketch or Paste Reproduction on Reverse Side.)



I, R.L. Hudson certify that I have carefully performed ~~or reviewed~~ the work done on the diagrammed corner as reported on this recordation form and approve the same.

R.L. Hudson Wyoming L.S. No. 519
 Signature of Surveyor Registration No.

STATE OF WYOMING,
 Office of Clerk, and Recorder,
 County of Laramie

This "corner record" was filed for record on the 22nd day of March, 1973, was noted on the cross-index plat and is assigned page No. 12-60, in book No. ONE.

Johy B. Williams
 County Official

Cross Index No. _____	T. _____	R. _____	Mer. _____
_____	T. _____	R. _____	Mer. _____
_____	T. _____	R. _____	Mer. _____
_____	T. _____	R. _____	Mer. _____
_____	T. _____	R. _____	Mer. _____
_____	T. _____	R. _____	Mer. _____
_____	T. _____	R. _____	Mer. _____

Micrographed

Indexed

Filed

The State of Wyoming }
County of Laramie } SS

This instrument was filed for record
at 4:22 o'clock P. M. on the
27th day of March
A. D. 1923 and duly recorded in
Book on page

John A. Williams

County Clerk & Ex-Officio Register of Deeds
By Deputy