

State of Wyoming Corner Record

Page 2

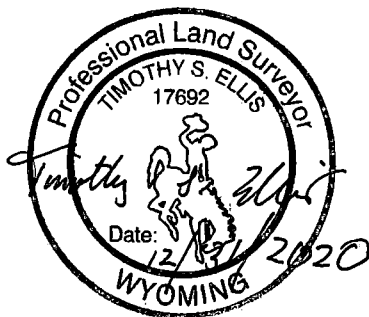
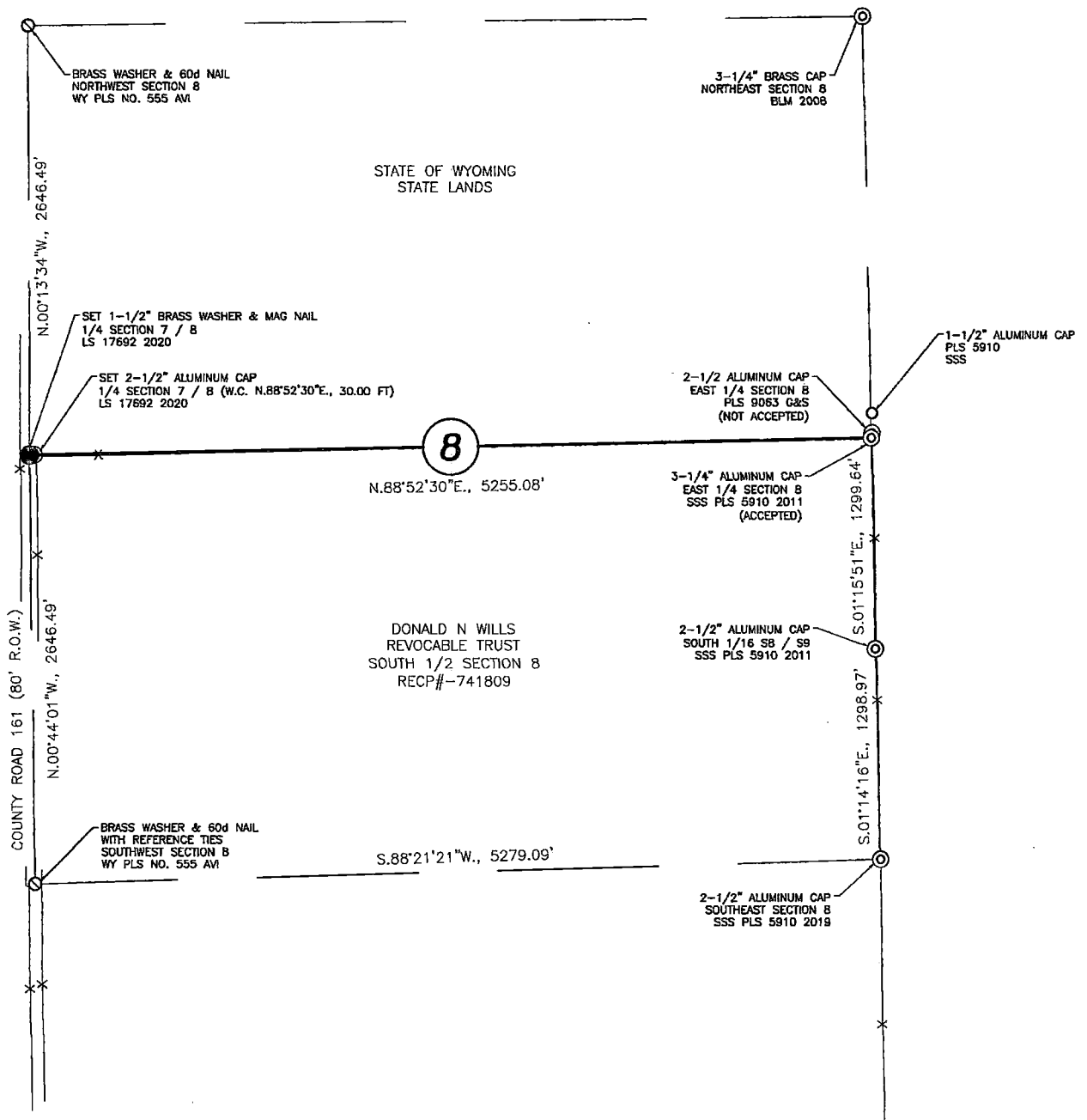


RECP #: 799667

RECORDED 1/15/2021 AT 9:10 AM BK# 2715 PG# 4

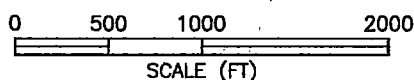
Debra K. Lee, CLERK OF LARAMIE COUNTY, WY PAGE 2 OF 2

T.12N., R.60W.



LEGEND

- FOUND BRASS WASHER & 60d NAIL AS NOTED.
- ⊙ FOUND CORNER MONUMENT AS NOTED.
- ⊙ SET 2.5" ALUMINUM CAP ON 5/8"x24" REBAR. LS 17692, 2020
- SET 2.5" ALUMINUM CAP ON 5/8"x24" REBAR. LS 17692, 2020



BASIS OF BEARINGS

BEARINGS ARE BASED ON THE WYOMING COORDINATE SYSTEM 1983 EAST ZONE.