

State of Wyoming Corner Record

(In compliance with the CORNER PERPETUATION AND FILING ACT, Wyoming Statutes, 1997 Section 33-29-140 et. seq., and the Rules and Regulations of the Board of Professional Engineers and Professional Land Surveyors)

Reverse side of this form may be used if more space is needed.

Record of original survey and citation of source of historical information (if corner is lost or obliterated). Description of corner monumentation evidence found and/or monument and accessories established to perpetuate the location of this corner. Sketch of relative location of monument, accessories, and reference points with course and distance to adjacent corner(s) (if determined in this survey). Method and rationale for reestablishment of lost or obliterated corner.

LOCATION: N 1/4 Corner, Sec. 9, T.12N., R.60W., 6th P.M., Laramie County, Wyoming.

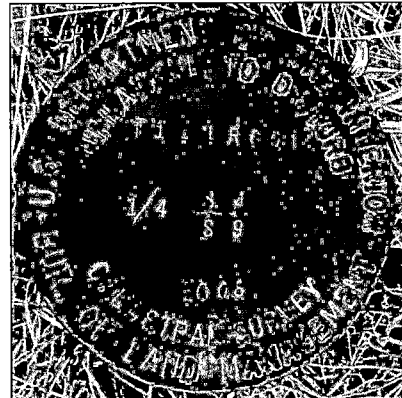
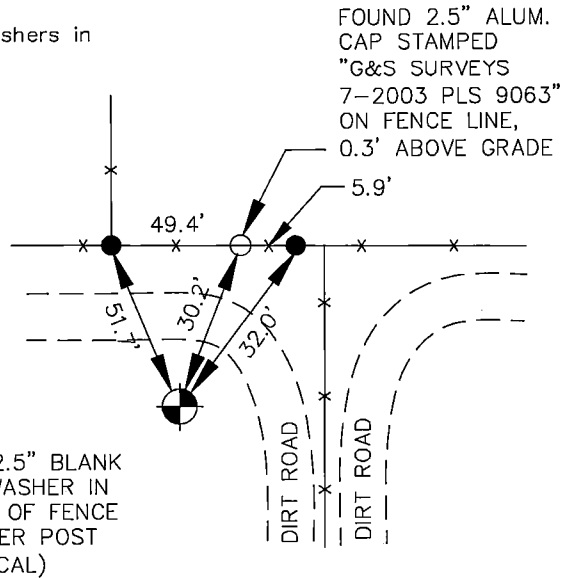
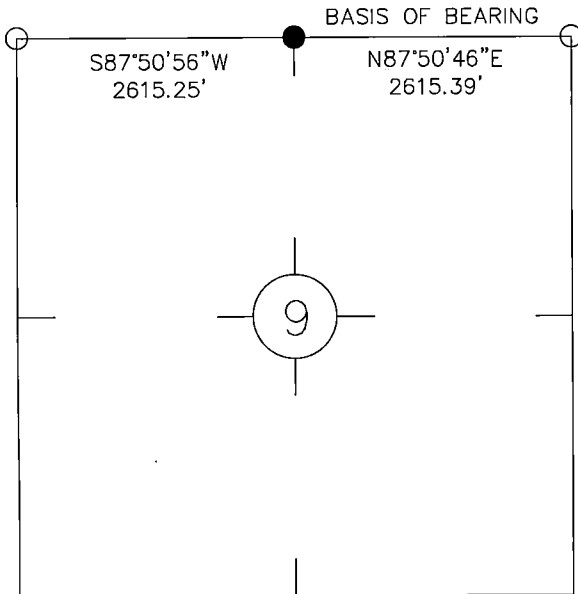
ORIGINAL RECORD: No record of original monument set.

FOUND: A 3.25" brass cap stamped "U.S. DEPARTMENT OF THE INTERIOR BLM 2008" on 2" steel pipe, in open grassland, 0.2' above grade.

MONUMENT AND ACCESSORIES ESTABLISHED: Set 2.5" blank tin washers in face of fence corner posts.

BEARINGS AND DISTANCES SHOWN HEREON ARE GRID AND BASED ON THE WYOMING STATE PLANE COORDINATE SYSTEM, NAD84/2011 BETWEEN THE MONUMENTS AS LISTED HEREON.

GRID DISTANCES ARE SHOWN AS GPS MEASURED IN THE FIELD. TO GET TO GROUND DISTANCES, MULTIPLY THE SHOWN DISTANCE BY 1.000249429.



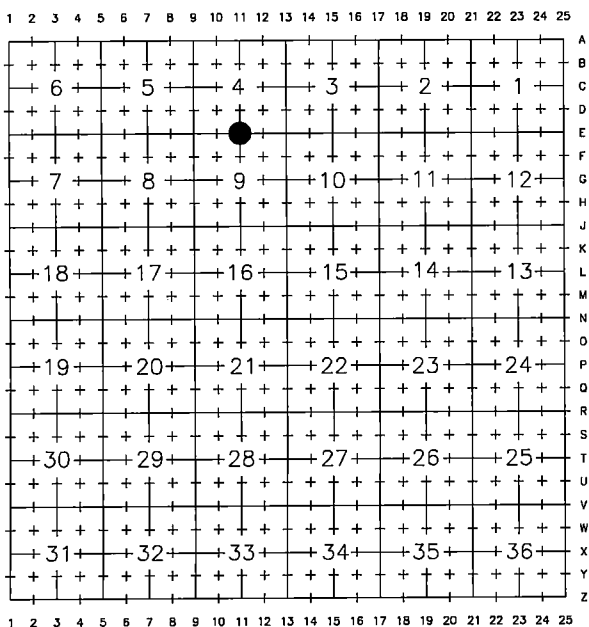
MONUMENT

Date of Field Work: 05/06/2017

Office Reference: APC.0001

Project Point No.: 45

Cross Index Plat



Firm/Agency, Address

ASCENT GEOMATICS, INC
7535 Hilltop Circle
Denver, Co. 80221

Telephone Number: 303-928-7128

This corner record was prepared by me or under my direction and supervision.

SEAL & SIGNATURE



RECP #: 711687

RECORDED 7/17/2017 AT 1:34 PM BK# 2550 PG# 1844
Debra K. Lee, CLERK OF LARAMIE COUNTY, WY PAGE 1 OF 1

Corner Name N/4 Corner Section 9, T 12 N, R 60 W, 6th P.M.

Cross-Index No.: E-11

County: Laramie Wyoming

SBRPEPLS/PLSW: March 1994; PLSW January 1998