

State of Wyoming Corner Record

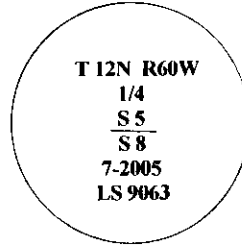
(In compliance with the *CORNER PERPETUATION AND FILING ACT*, Wyoming Statutes, 1997, Section 33-29-140, et seq., and the Rules and Regulations of the Board of Registration for Professional Engineers and Professional Land Surveyors)

Reverse side of this form may be used if more space is needed.

Record of original survey and citation of source of historical information (if corner is lost or obliterated). Description of corner monumentation evidence found and/or monument and accessories established to perpetuate the location of this corner. Sketch of relative location of monument, accessories, and reference points with course and distance to adjacent corner(s) (if determined in this survey). Method and rationale for reestablishment of lost or obliterated corner.

FOUND: No evidence of original stone. No stones found within 200' of search area.

SET: An aluminum survey cap, marked appropriately straight line And equidistant between the Northwest Corner of Section 8 and Northeast Corner of Section 8. An existing fence corner with rubber tire set on corner Post lies 8 feet east and directly on the north section line of Section 8. With No specific existing corner location, I set the monument as described above.



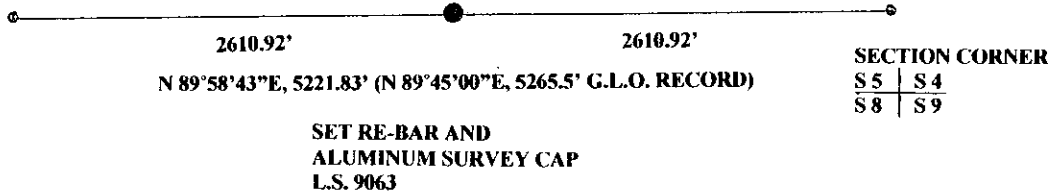
MONUMENT DESCRIPTION

FOUND SET NAIL IN CENTERLINE OF COUNTY ROAD 161

SECTION CORNER
S 6 | S 5
S 7 | S 8

QUARTER CORNER
S 5
S 8

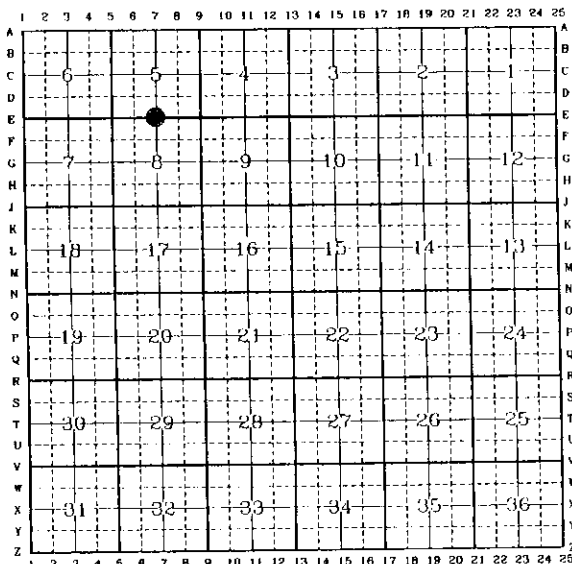
FOUND SET 1" DIAMETER IRON PIN SURROUNDING CONCRETE STONES REHABILITATED WITH ALUMINUM SURVEY CAP L.S. 9063



BASIS OF BEARING- G.L.O. RECORD BEARING NORTH LINE OF SECTION 9

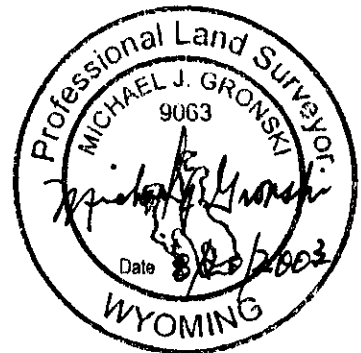
Date of Field Work: 7-2003 Office Reference: _____

CROSS INDEX DIAGRAM



Land Surveyor / Firm / Address
MICHAEL J. GRONSKI
G&S SURVEYS
5211 OGDEN ROAD
CHEYENNE, WYOMING 82009
Telephone: (307) 637-6127

This corner record was prepared by me or under my direction and supervision.
SEAL & SIGNATURE



Corner Name: NORTH QUARTER CORNER Section: 8 T 12N. R 60W. 6TH P.M. Cross-Index No.: E-7
SBRPEPLS/PLSW: March 1994; PLSW January 1998

RECORDED 1/11/2008 AT 1:12 PM REC# 491249 BK# 2040 PG# 1170
DEBRA K. LATHROP, CLERK OF LARAMIE COUNTY, WY PAGE 1 OF 1