

**CERTIFIED LAND CORNER RECORDATION**

DESCRIPTION OF CORNER EVIDENCE FOUND, AND ORIGINAL RECORD (If known)

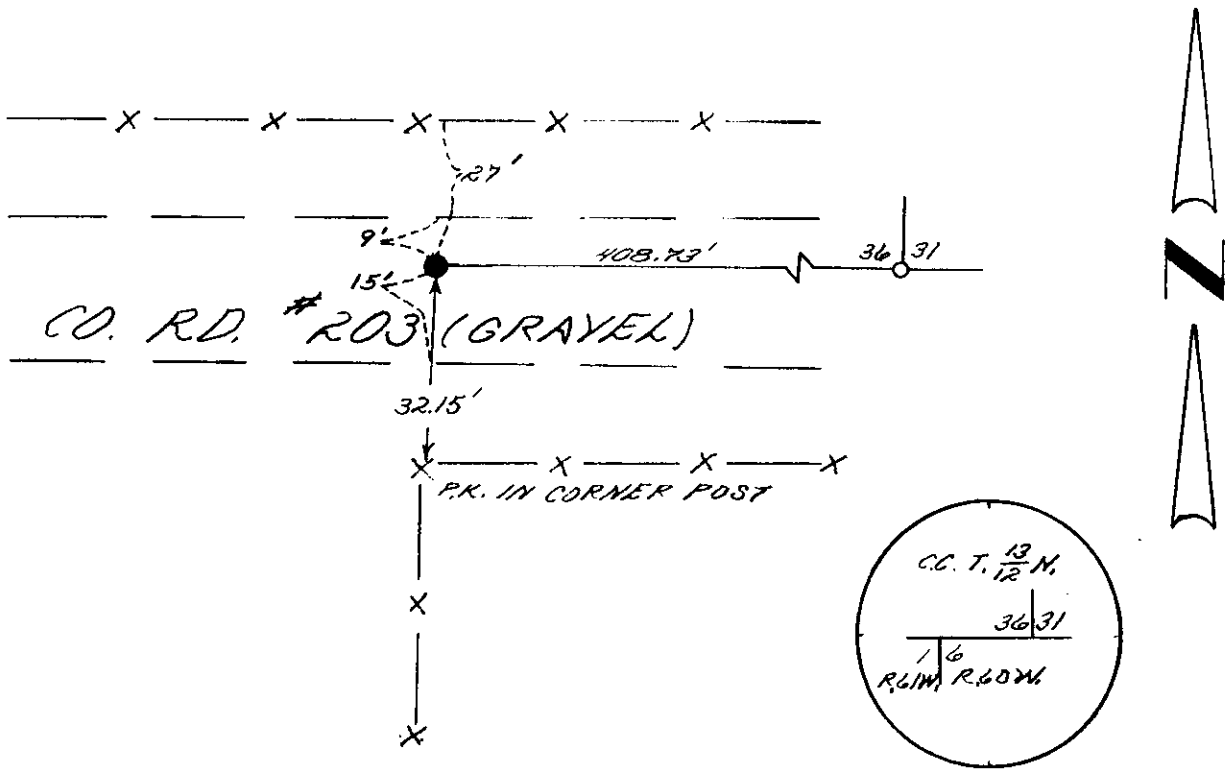
FOUND: D.L.M BRASS CAP FIRMLY SET 20" BELOW SURFACE, MARKED AS SHOWN BELOW  
 SET: 1/2" X 18" LONG REBAR DIRECTLY ON TOP OF BRASS CAP 2" BELOW SURFACE

T. 13 N.  
 R. 61 W.  
 36 31  
 1 6  
 CO.  
 R. 61 W. R. 60 W.

DESCRIPTION OF MONUMENT AND ACCESSORIES ESTABLISHED TO PERPETUATE THE ORIGINAL LOCATION OF THIS CORNER:

SEE TIES BELOW

SKETCH, WITH COURSE AND DISTANCE TO ADJACENT CORNER IF DETERMINED IN THIS SURVEY.  
 (May Sketch or Paste Reproduction on Reverse Side.)



I, JOHN A STEIL certify that I have carefully performed or reviewed the work done on the diagrammed corner as reported on this recordation form and approve the same.

John A. Steil U.S. #500  
 Signature of Surveyor Registration No.

STATE OF WYOMING,  
 Office of Clerk and Recorder,  
 County of Laramie

740798

This "corner record" was filed for record on the APR 12 1984 day of APR 12 1984, 1984, was noted on the cross-index plat and is assigned page No. \_\_\_\_\_, in book No. \_\_\_\_\_.

| County Official             |                 |                 |                 |
|-----------------------------|-----------------|-----------------|-----------------|
| Cross Index No. <u>A-25</u> | T. <u>12 N.</u> | R. <u>61 W.</u> | Mer. <u>6th</u> |
| <u>A-1</u>                  | T. <u>12 N.</u> | R. <u>60 W.</u> | Mer. <u>6th</u> |
| _____                       | T. _____        | R. _____        | Mer. _____      |
| _____                       | T. _____        | R. _____        | Mer. _____      |
| _____                       | T. _____        | R. _____        | Mer. _____      |
| _____                       | T. _____        | R. _____        | Mer. _____      |
| _____                       | T. _____        | R. _____        | Mer. _____      |